

BEECHWORTH & SURROUNDS • BENALLA • BRIGHT & SURROUNDS • GLENROWAN  
KING VALLEY & MILAWA GOURMET REGION • MANSFIELD • RUTHERGLEN

# feast

## HIGH COUNTRY



EAT • DRINK • STAY

Yours  
to keep



**BAILEYS**  
of GLENROWAN



*Custodians of a priceless  
winemaking heritage*

779 Taminick Gap Road, Glenrowan, VIC, 3675

P: (03) 5766 1600 E: [cellardoor@baileysofglenrowan.com](mailto:cellardoor@baileysofglenrowan.com)

Cellar Door open every day, 10am – 5pm, except Christmas Day, Boxing Day and Good Friday  
Old Block Café open Friday, Saturday and Sunday from 12pm. Bookings recommended.

 /baileys1870

 @baileys1870

# feast

## HIGH COUNTRY

Welcome

34 • BEECHWORTH & SURROUNDS

48 • BENALLA

56 • BRIGHT & SURROUNDS

70 • GLENROWAN

80 • KING VALLEY & MILAWA GOURMET REGION

102 • MANSFIELD

112 • RUTHERGLEN





# FEAST

## HIGH COUNTRY

Discover a land of plenty. A place to get away, to unwind, to get down to earth, breathe clean air. Indulge in beautifully cooked fresh seasonal produce and award-winning wines in a place where the welcome is genuine and the experience truly authentic. In Victoria's High Country, 'the good life' is no mere cliché... it's just the way life's lived.

The region's four distinct seasons and rich alluvial soils deposited over millenia by the rivers and creeks that rise in mountains and slice through the beautiful valleys below, spilling into the fertile plains beyond produce an extraordinary bounty.

Almost anything grows and thrives here. Berries, cherries, apples and pears, nuts, olives and honey, citrus, stone fruit, asparagus and saffron. Prime beef, fat lambs and organic pork are raised on lush pastures and rich cheeses and butters are hand crafted from the milk of locally raised dairy goats and cows. Even the hops that flavour the famous local ales made around the region are grown here.

High Country chefs work magic with all those ingredients and the proof of the pudding is in the eating... at award-winning restaurants, cafés, pubs and cellar doors around the region.

And then there's the wine. Vineyards grow an extensive variety of grapes transformed by High Country winemakers into some of Australia's best drops, from the Italian heritage varieties grown in the King Valley to the durif and muscat of Rutherglen and Glenrowan to the internationally awarded wines born of the flinty granitic soils of the Beechworth hills.

Come for a few days or a few weeks. Bring the bikes, bring your appetite and explore a beautiful corner of the world where the good life is simply the way life's lived. Enjoy the Feast!



## CONTENTS

### EXPLORE BY EXPERIENCE

- 06 • EAT
- 08 • DRINK
- 10 • LEARN
- 14 • BREWERY TRAIL
- 16 • RIDE HIGH COUNTRY
- 18 • OUTDOORS
- 20 • FEAST HIGH COUNTRY FESTIVAL
- 22 • FESTIVALS & EVENTS
- 26 • FARMERS' MARKETS
- 28 • STRAIGHT TO THE SOURCE

### EXPLORE BY REGION

- 34 • BEECHWORTH
- 48 • BENALLA
- 56 • BRIGHT & SURROUNDS
- 70 • GLENROWAN
- 80 • KING VALLEY & MILAWA GOURMET REGION
- 102 • MANSFIELD
- 112 • RUTHERGLEN
- 128 • INDEX
- INSIDE BACK COVER • REGIONAL MAP

# feast HIGH COUNTRY







# EAT

An unbeatable gourmet destination, whatever the season. Dine by crackling firesides in winter or out amongst the vines in summer. Eat, drink, be happy, at cool cafés and wine bars, craft breweries, stylish pubs, Hatted restaurants plus cellar doors intimate and grand. Bon appetit!

## ALL HAIL!

Many gifted chefs call this region home. Among the most decorated is Michael Ryan, whose Provenance in Beechworth is a destination in its own right. His sublime Japanese-influenced flavours and carefully selected wine lists have earned him many gongs including, since 2009, two Chef's Hats and best regional wine list awards in the prestigious Good Food awards.

Meanwhile at The Terrace at All Saints Estate Wahgunyah, Simon Arkless continues to win accolades, and Hats each year since 2014, for his sublime, beautifully crafted food served in the picture perfect surrounds of one of Australia's most iconic, historic wineries.

And at Brown Brothers winery at Milawa, Patricia's Table Head Chef Jarrod Kelley's passion for his craft, and the fresh local ingredients he uses, is evident with every memorable dish he creates at this consistently impressive restaurant.

## IT'S THE VIBE

The vibe's more casual but the food's a cut above at dozens of eateries around the region. Head to Bright for seriously good house-distilled Remedy Gin cocktails and fine flavours skilfully prepared by ex-Tani Eat & Drink duo, Rachel Reed and Hamish Nugent at their cool bar, Reed & Co.

In Beechworth diners are spoiled for choice with The Empire Hotel and the Ox & Hound consistently delivering standout dining experiences. In Mansfield, try Mat Picone's Coffee Merchant, grab some tricked up fast food from George & Al Roy or satisfy your inner carnivore at Bos Taurus. Eat ethically at Saint Monday in Yackandandah and fresh from the kitchen garden at Ripe at Buller Wines in Rutherglen. In the King Valley, don't miss the stunning views and superb Sicilian food at Christmont winery or head to Wangaratta for a leisurely riverside lunch at Rinaldos Casa Cucina.



A man and a woman are standing in a vineyard, clinking their wine glasses. The woman is on the left, wearing a denim jacket and sunglasses, and the man is on the right, wearing a pink polo shirt and glasses. They are both smiling and looking at each other. The background is a lush green vineyard with white flowers.

# DRINK

Long hot summers and cold winters create ideal conditions for grapes. Which is why vignerons of the six distinct growing regions of the High Country - Rutherglen, Beechworth, Glenrowan, the Alpine and King Valleys and Upper Goulburn - are renowned for the quality and diversity of their wines.

Most vineyards are family owned, and some, from Rutherglen and Glenrowan, have been crafting wines for generations. Many have friendly cellar doors open to the public, or by appointment, where the makers themselves are happy to offer guided tastings. Cycling from cellar door to cellar door is a perfect way to explore and taste. In most places the terrain is easy and wineries are just a short pedal apart.

### FROM THE VALLEYS

Geographically, the King and Alpine Valleys are not so far apart, but each is famous for producing an amazing variety of high quality wines bearing the distinctive character of their respective regions. Discover a little slice of Italy in the King Valley, famous for its warm hospitality and signature pinot grigio, prosecco and sangiovese varietals. Must-visit cellar doors include Chrismont, Pizzini, Dal Zotto, King River Estate, Sam Miranda and Brown Brothers, to name a few.

[winesofthekingvalley.com.au](http://winesofthekingvalley.com.au)

At the foothills of the snow covered peaks, the Alpine Valleys wine region is growing in stature with more than 30 different varieties crafted by a number of excellent vignerons. Call into the Billy Button cellar door in Bright to taste wines by celebrated maker, Jo Marsh. Or take in the stunning views of Mt Buffalo from the cellar doors of Feathertop and Ringer Reef and the beautiful vine-studded surrounds of Gapsted Wines.

[alpinevalleysvignerons.com.au](http://alpinevalleysvignerons.com.au)

### MAINLY ON THE PLAIN

Rutherglen has been making wine since the Gold Rush and some of the original families who planted vines in the fertile Murray River plains then are still going strong and still making memorable, award-winning drops. Internationally admired muscats are a must-taste here. Visit Chambers Rosewood, All Saints Estate and Scion for unique cellar door experiences.

[winemakers.com.au](http://winemakers.com.au)

### SMALL AND PERFECT

Cradled by the beautiful Warby Ranges is the small but perfectly formed Glenrowan Wine Region, offering robust reds and classic fortifieds like topaques. Lunch at the historic Bailey's cellar door is a year-round treat.

[visitwanganaratta.com.au](http://visitwanganaratta.com.au)

### And also...

Aside from the amazing wines to taste and savour, the High Country's drinks list also offers incredible ales from eight craft breweries, Hurdle Creek and Remedy Gin, vermouth from Indigo Vineyard, crisp Beechworth Cider from Amulet and the elegant Correll aperitif from Jones Winery in Rutherglen.





Cooking classes with some of the High Country's best is a unique and delicious way to discover the tastes and the good life of the region.

Grab an apron and learn first hand the culinary secrets of legendary chef, Patrizia Simone in Bright, Katrina Pizzini of Pizzini Wines' A Tavola! in the King Valley and The Pickled Sisters' Stewart Gilchrist in Wahgunyah. At Politini Wines in the King Valley, sign on for a Sicilian Cooking Experience, learning traditional salami making and the art of creating the perfect cannoli.

And for something completely different, learn what the prisoners ate, grew and who cooked it at the Big House Cooking School at the Old Beechworth Gaol. These unique culinary history lessons include entertaining classes and lunch led by talented local chef, Sally Lynch.



• FEAST •

A group of people are running through a field of tall grass and trees. In the foreground, a person is seen from behind, wearing a light-colored long-sleeved shirt and patterned pants, carrying a basket. In the background, three other people are running away from the camera. The scene is set in a lush, green field with tall trees in the background. The lighting is warm, suggesting late afternoon or early morning.



• FEAST •



# HIGH COUNTRY BREWERY TRAIL

Let the craft brewers of the High Country take you on a delicious journey, from the rivers and valleys to the mountains and everywhere in between. Breweries stretch across the entire region, and provide the perfect quencher after hitting the mountain bike trails, taking a hike or simply enjoying the views.

The eight breweries that make up the High Country Brewery Trail offer their own unique style and range of hand-crafted beers, but what unites them all is passion - for the region, its pristine water and locally-grown hops, and the incredible landscapes that make the High Country the perfect place to live, work and play.



## Black Dog Brewery

339 Booth Road  
TAMINICK, via GLENROWAN  
03 5766 2282  
[blackdogbrewery.com.au](http://blackdogbrewery.com.au)



## Bright Brewery

121 Great Alpine Road  
BRIGHT  
03 5755 1301  
[brightbrewery.com.au](http://brightbrewery.com.au)



## Rutherglen Brewery

121b Main Street  
RUTHERGLEN  
02 6032 9765  
[rutherglenbrewery.com](http://rutherglenbrewery.com)



## Blizzard Brewing Company

5 Cattle Pen Drive  
DINNER PLAIN  
0417 335 548  
[blizzardbrewing.com](http://blizzardbrewing.com)



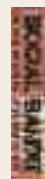
## Bridge Road Brewers

Old Coach House, Ford Street  
BEECHWORTH  
03 5728 2703  
[bridgeroadbrewers.com.au](http://bridgeroadbrewers.com.au)



## Sweetwater Brewing Company

211 Kiewa Valley Highway  
TAWONGA SOUTH  
03 5754 1881  
[sweetwaterbrewing.com.au](http://sweetwaterbrewing.com.au)



## Social Bandit Brewing Co.

223 Mt Buller Rd  
MANSFIELD  
03 5775 3281  
[socialbanditbrewing.com.au](http://socialbanditbrewing.com.au)



## King River Brewing

4515 Wangaratta-Whitfield Road  
WHITFIELD  
03 5729 3604  
[kingriverbrewing.com.au](http://kingriverbrewing.com.au)



# RIDE HIGH COUNTRY

## FUEL FOR HUNGRY CYCLISTS

The High Country is Australia's premier cycling destination with a fantastic range of trails and experiences to suit everyone and anyone who can ride a bike.

There's no better way to work up an appetite and take in the amazing views along the way than cruising along the more than 200km of safe, off road trails. Or maybe getting the adrenaline going at one of the seven excellent mountain bike parks around the region, including Mt Buller, home of the only Epic Trail in the Southern Hemisphere. Or for road cyclists, how about tackling some of the most challenging road climbs in the country?

Whatever your pedalling passion, the High Country is also heaven for cyclists who need fuel. At the end of the ride, or along the way, take time out for great food, coffee, beer and wine at bakeries, cellar doors, pubs, cafés and farm gates.

There are more than 100 Ride High Country Preferred businesses around the region warmly welcoming cyclists of all stripes - hiring everything from electric mountain bikes to bicycles built for two, to providing shuttle services, bike washing or just topping up your water bottle. Check out the full list at [ridehighcountry.com.au/bike-services](http://ridehighcountry.com.au/bike-services)

## FOOD ON WHEELS

One of the best ways to explore the High Country on wheels is to take one of the half or multi-day cycling package tours available.

Tour de Vines knows the High Country intimately and has led the way in providing memorable, fully supported gourmet tours of the Murray to Mountains Rail Trail from Beechworth to Bright and the Milawa Gourmet Region. The tours take in cellar doors, farm gates, cafés and restaurants and include places to lay your head at the end of day's pedalling and tasting.

For something pacier, mountain bikers can sign on for eight exhilarating days exploring each of the region's seven outstanding mountain bike parks, on the Ultimate Bikes, Beers & Bakeries Road Trip with MTB Adventures.

## PEDAL TO PRODUCE

Or take a self-guided Pedal to Produce tour of the cellar doors, picnic spots, cafés, breweries and farm gates along the Murray to Mountains Rail Trail.

[pedaltoproduce.com.au](http://pedaltoproduce.com.au)



# OUTDOORS

## EN PLEIN AIR

When the snow melts and the sun's high in the sky, wildflowers light up the region's national parks and forests in stunning displays best seen on a hike, a bike or a horse ride from spring to autumn. Rivers and lakes offer cool, shady places for a dip, a paddle, a picnic and, for the not so faint hearted, there are sheer cliffs to scale and reliable thermals to glide on.

Whatever the alfresco adventure de jour, load up the esky, the panniers, the day pack or the saddlebags with fresh local bread, cheese and trout, succulent berries and a fine bottle of crisp, chilled white, smile and make a toast to the High Country's truly great outdoors.

## WALK HIGH COUNTRY

From guided mountain treks to historic village tours, the High Country offers an outstanding range of walking experiences.

[walkhighcountry.com.au](http://walkhighcountry.com.au) is a great place to start. More than 100 walks around the region are detailed here, including distance, grade, maps and walk information. Whichever walk you settle on, you're never very far from somewhere to pause and refuel.

## SNOWSHOE TO FONDUE

The Alpine Nature Experience at Mt Hotham is a memorable way to combine a winter walk with a warming feast. Snowshoe to an authentic French fondue at a campsite in the snow, then spend the night in a purpose-built eco-dome under the stars.



## HIKE & BIKE

Take a hike up Mt Buller, savour the sunset, and a delicious dinner and cosy up in a lodge. Mountain bike down again via the gorgeous Delatite Trail.

## TALES, TRAILS & TUCKER

At Falls Creek, soak up the stunning scenery of the Bogong High Plains on a guided 4km walk with a local historian, followed by a sumptuous picnic of local seasonal fare.





# feast

HIGH  
COUNTRY  
FESTIVAL



## AN INVITATION TO FEAST!

The Feast High Country Festival is the region's annual invitation to lovers of great food, wine and craft beer.

Feast, forage, taste and savour the produce and the flavours of the High Country each May. Award-winning chefs, growers and makers are the stars of a packed program of free and ticketed foodie events held on mountain tops, at cellar doors, cafés and restaurants, breweries, olive groves and by the light of blazing bonfires.

From classes with the masters in everything from cannoli to salami making, olive pickling and beer brewing to dinners intimate and grand, tastings with vigneron and pedalling to picnics, Feast High Country Festival is a perfect way to indulge in the bounty of the region as well as meet the clever people who bring it all to the table.

For the full event program, visit [feasthighcountry.com.au](http://feasthighcountry.com.au)



# FESTIVALS & EVENTS

## AUTUMN

### MELBOURNE FOOD & WINE FESTIVAL

*Victoria's High Country*

The High Country's vibrant culinary culture will flourish in March with a program of events celebrating the region's bountiful food and wine. [melbournefoodandwine.com.au](http://melbournefoodandwine.com.au)

### PICNIC IN THE PARK

*Mirimbah*

Enjoy this delicious annual food and wine event in the picturesque surroundings of Mirimbah Park at the base of Mt Buller. [mtbuller.com.au](http://mtbuller.com.au)

### HIGH COUNTRY HOPS FESTIVAL

*Beechworth*

A celebration of Victoria's High Country Brewers and Hop Growers. Featuring local food producers, musicians, performers, children's activities. The Rostrevor Hop Gardens and processing facility at Myrtleford also opens for an official tour. [bridgeroadbrewers.com.au](http://bridgeroadbrewers.com.au)

### TASTES OF RUTHERGLEN

*Rutherglen*

A progressive feast showing off the region's best produce and wine. Travel from winery to winery to sample, taste and sip the incredible flavours of Rutherglen. [tastesofrutherglen.com.au](http://tastesofrutherglen.com.au)

### DINNER PLAIN EASTER FESTIVAL

*Dinner Plain Alpine Village*

Plenty of gourmet High Country food to enjoy served by local eateries at this fun annual family festival. [visitdinnerplain.com](http://visitdinnerplain.com)

### UPPER GOULBURN WINE REGION VINTAGE CELEBRATIONS

*Mansfield*

Enjoy a fantastic range of quality regional wines, food and fresh produce and meet the makers and growers at this major annual event in Mansfield. [mansfieldwinemakers.com.au](http://mansfieldwinemakers.com.au)

### WANDILIGONG NUT FESTIVAL

*Wandiligong*

This fun family day out celebrates the local harvest of hazelnuts, walnuts and chestnuts. Cooking demonstrations, information sessions, art and more. [brightvic.com/wandinutfestival](http://brightvic.com/wandinutfestival)

### FEAST HIGH COUNTRY FESTIVAL

Feast and forage your way around a packed program of events showcasing the excellent food, wine, beer, chefs, makers and growers of Victoria's High Country. From intimate hands-on cooking classes, behind-the-scenes tastings and tours to unforgettable dining experiences in renowned regional restaurants. Don't miss this fantastic annual celebration of the best of the region. [feasthighcountry.com.au](http://feasthighcountry.com.au)

### LA FIERA

*Myrtleford*

Celebrate the Italian way! La Fiera has become a Myrtleford institution celebrating the area's strong Italian heritage with outstanding food, wine, art, music, guest chefs and more. [lafiera.com.au](http://lafiera.com.au)

CONTINUE OVER...

# FESTIVALS & EVENTS



• FEAST •

## WINTER

### KING VALLEY BALLOON FESTIVAL

*King Valley*

Over the Queen's Birthday long weekend, marvel at masses of hot air balloons floating over the King Valley from Milawa and Whitfield, culminating in the Brown Brothers Night Glow event where mulled wine and warming wintry foods accompany a spectacular show of balloons, music and light.

[kingvalleyballoonfestival.com.au](http://kingvalleyballoonfestival.com.au)

### RUTHERGLEN WINERY WALKABOUT

*Rutherglen*

The longest-running wine festival in the state features wine tastings, live music, entertainment, tours, markets, masterclasses, buffet breakfasts and more at over 17 wineries across a packed long weekend.

[winerywalkabout.com.au](http://winerywalkabout.com.au)

### TRAILS, TASTINGS & TALES

*Glenrowan*

Across the June long weekend visitors can enjoy food, wine and a range of interesting attractions at each winery with plenty of music, entertainment, workshops, wine appreciation classes and local produce.

[visitglenrowan.com.au](http://visitglenrowan.com.au)

### WEEKEND FIT FOR A KING

*King Valley*

Sample Italian and international wine varieties and indulge in gourmet food influenced by the region's distinct Italian culture.

[winesofthekingvalley.com.au](http://winesofthekingvalley.com.au)

## SPRING

### RUTHERGLEN SPRING SWING

*Rutherglen*

Enjoy a day filled with award-winning wines, gourmet food, live music at leading Rutherglen wineries.

[winemakers.com.au/spring-swing](http://winemakers.com.au/spring-swing)

### BEECHWORTH VIGNERONS SPRING TASTING

*Beechworth*

A comprehensive exhibition of wines from the Beechworth wine region offering a rare opportunity to taste all of Beechworth in one room.

[beechworthvineyards.com.au](http://beechworthvineyards.com.au)

### ANNUAL GOLDEN OLIVE AWARDS

*Rutherglen*

Awards dinner and celebration presented by the Olive Producers of North East Victoria.

[australianolives.com.au](http://australianolives.com.au)

### RUTHERGLEN WINE SHOW & AUSTRALIAN FORTIFIED WINE SHOW

*Rutherglen*

The Awards dinner and wine tastings are popular events with entries received from across Australia and assessed by world-class judges.

[rutherglenwineshow.com.au](http://rutherglenwineshow.com.au)

### NORTH EAST VICTORIA WINE SHOW

*Myrtleford*

A truly local wine show with public tastings and gala dinner

[alpinevalleysvignerons.com.au](http://alpinevalleysvignerons.com.au)

### GLENROWAN WINEMAKERS WEEKEND

*Glenrowan*

An annual celebration and showcase of the Glenrowan wine region. Includes outdoor adventure activities, wine learning experiences, Gourmet Getabout dinner, the Winemakers' breakfast and Glenrowan Grazing at the cellar doors.

[visitwanganatta.com.au](http://visitwanganatta.com.au)

### LA DOLCE VITA

*King Valley*

Enjoy crisp whites and food-friendly reds with delicious offerings including handmade pasta and gnocchi, pizzas, seafood and mouth-watering Italian desserts. The sweet life indeed!

[winesofthekingvalley.com.au](http://winesofthekingvalley.com.au)

### WANGARATTA FESTIVAL OF JAZZ & BLUES

*Wanganatta*

Celebrate the long weekend with jazz, blues, food, wine and fun.

[wanganattajazz.com](http://wanganattajazz.com)





• FEAST •

# FARMERS' MARKETS

[feasthighcountry.com.au/farmers-markets](http://feasthighcountry.com.au/farmers-markets)

## BEECHWORTH FARMERS' MARKET

**When:** 1st Saturday of the month  
**Where:** Christ Church, cnr Church & Ford St Streets  
**Contact:** 03 5728 2672  
[beechworthanglican@gmail.com](mailto:beechworthanglican@gmail.com)  
[facebook.com/beechworthfarmersmarket](https://facebook.com/beechworthfarmersmarket)

## BENALLA LAKESIDE CRAFT & FARMERS' MARKET

**When:** 4th Saturday of the month, 9am-1pm  
**Where:** Lake Benalla Foreshore, Fawckner Drive  
**Contact:** 0467 281 323  
[benallamarket@gmail.com](mailto:benallamarket@gmail.com)

## BRIGHT MARKET

**Make it. Bake it. Grow it.**  
**When:** 3rd Saturday of the month, 9am-1pm  
**Where:** Howitt Park, Howitt Street  
**Contact:** 0402 890 940  
[markets@brightchamber.com.au](mailto:markets@brightchamber.com.au)  
[facebook.com/brightmarkets](https://facebook.com/brightmarkets)

## MANSFIELD FARMERS' MARKET

**When:** 4th Saturday of the month, 8:30am-1pm  
**Where:** High St median strip, opposite the Post Office  
**Contact:** 0417 319 879  
[mansfieldfarmersmarket@gmail.com](mailto:mansfieldfarmersmarket@gmail.com)  
[facebook.com/mansfieldfarmersmarket](https://facebook.com/mansfieldfarmersmarket)

## MILAWA GOURMET REGION PRODUCERS' MARKET

**When:** Beginning of each season, 9am-2pm (check details via website)  
**Where:** The Crossroads, Milawa-Bobinawarrah Road  
**Contact:** [milawagourmet.com.au](http://milawagourmet.com.au)  
[facebook.com/milawagourmetregion](https://facebook.com/milawagourmetregion)

## MOYHU FARMERS' MARKET

**When:** 3rd Saturday of the month, 8am-12pm  
**Where:** Moyhu Lions Park  
**Contact:** 03 5727 9464 or 03 5721 9911

## MYRTLEFORD FARMERS' MARKET

**When:** 4th Saturday of the month, 8am-12:30pm  
**Where:** Myrtleford Piazza, Great Alpine Road  
**Contact:** 0497 944 626  
[admin@myrtlefordfarmersmarket.com.au](mailto:admin@myrtlefordfarmersmarket.com.au)  
[facebook.com/myrtlefordfarmersmarket](https://facebook.com/myrtlefordfarmersmarket)

## RUTHERGLEN FARMERS' MARKET

**When:** 2nd Sunday of the month, 9am-12:30pm  
**Where:** Rutherglen Lions Park, Douglas Street  
**Contact:** 1800 622 871  
[alexandra@explorerutherglen.com.au](mailto:alexandra@explorerutherglen.com.au)  
[facebook.com/rutherglenfarmersmarket](https://facebook.com/rutherglenfarmersmarket)

## TOLMIE CRAFT & FARMERS' MARKET

**When:** 3rd Saturday of the month (April, September & December), 8:30am-1pm, December twilight market from 5pm.  
**Where:** Tolmie Sports Ground, Old Tolmie Road  
**Contact:** 03 5776 2231

## WANGARATTA FARMERS' MARKET

**When:** 2nd Saturday of the month, 8am-12pm  
**Where:** Apex Park, Clement St  
**Contact:** 0419 337 725  
[wangarattafarmersmarket@gmail.com](mailto:wangarattafarmersmarket@gmail.com)  
[facebook.com/wangarattafarmersmarket](https://facebook.com/wangarattafarmersmarket)

## YACKANDANDAH FARMERS' MARKET

**When:** 3rd Saturday of the month, 9am-1pm  
**Where:** Yackandandah Lions Club, Wellsford Street  
**Contact:** 0418 122 921  
[facebook.com/yackandandahmarket](https://facebook.com/yackandandahmarket)





• FEAST •

# STRAIGHT TO THE SOURCE

In a time when 'fresh' lettuce lasts for four weeks, apples are bought having been 'asleep' for 11 months, bananas are gassed and heated to turn yellow, and kids don't know that butter comes from cows, where can we turn for some honest grub these days?

Never fear! Dotted throughout the High Country are places where you don't need a PhD to uncover where your food came from - you just go there. Where finding out how meat was treated before you take a bite is as simple as saying "mate, are these cows organic?" Where kids gleefully stain their little mouths and hands picking their own berries, and where you can cuddle a baby goat without buying a ticket.

Pack up the family, meander through these farm gates and literally get back to grass roots. These experiences are so much more than just amazing 'zero kilometres' food - they're a learning event for adults and children alike. Thanks to the passionate, friendly and proud producers, you'll return home with a full belly, mind buzzing with all the things you can do with your buckets of fresh produce, and children reciting heritage apple varieties!

First lesson: remember fresh food is seasonal, therefore many farm gates are as well.

Enjoy!

## **MILAWA ORGANIC BEEF**

Farm gate selling certified organic 100% grass-fed beef (year-round), walnuts (year-round) and chestnuts (Apr-May).

See website for opening hours or by appointment - phone 0429 809 973.

**214 Markwood-Everton Road, MARKWOOD**  
**0429 809 973 or 0357 270 397**  
**[milawaorganicbeef.com.au](http://milawaorganicbeef.com.au)**

## **COTTONWOODS ORGANICS**

Growers of seasonal organic vegetables and award-winning garlic. Stop by the farm gate for fresh produce, potted herbs, flowers and seedlings, compost, manure and more.

Open daily 9am-6pm.

**2139 Snow Road, MILAWA**  
**0499 787 777**  
**[cottonwoods.com.au](http://cottonwoods.com.au)**

## **TOLPUDDLE GOAT CHEESE & FARM FOODS**

Tour this sustainable goat farm and micro-dairy specialising in cheeses, goat milk, goat meat, homemade pastes and relishes, soaps and lotions (fresh products subject to seasonality).

Open Sept-June, 11am-4pm Wed-Sat (plus public holidays and Sun during school holidays).

**70 Rusholme Road, TARRAWINGEE**  
**03 5725 1759**  
**[tolpuddle.com.au](http://tolpuddle.com.au)**

CONTINUE OVER...



# STRAIGHT TO THE SOURCE



• FEAST •

## **EUROPA GULLY ORCHARD**

Nothing says summer like cherry-stained fingers! Enjoy the delicious pleasure of picking your own cherries at this family-owned orchard in Stanley.

Open daily 9am-4pm  
from early Dec to mid Jan.

**Chambeyron Road, STANLEY**

## **BLACK BARN FARM @ EUROPA GULLY ORCHARD**

Fill your buckets with crunchy, flavourful, pesticide-free apples straight from the tree. Discover heritage varieties like Mutsu, Smoothee, King Cole, Five Crown and Cameo.

Open Saturdays 10-5pm and every day during school holidays and public holidays from 15 Feb-16 May.

**Chambeyron Road, STANLEY**

**0418 520 554**

**blackbarnfarm.com.au**

## **BEECHWORTH BERRIES**

Get set for a berry-filled adventure as you pick your own berries, or grab some already picked but equally as fresh and delicious.

Strawberries Oct-Jun, raspberries mid-Nov-Jun, and blackberries Dec-Jan. Daily 8am-3pm (season dependant - check Facebook for updates).

**46 Reids Way, WOORAGEE**

**0438 287 377**

**beechworthberries.com.au**

## **WANDIFUL PRODUCE**

Farm fresh biodynamic produce and artisan cheese, farm to table at its best! Enjoy cheese tastings of The Peaks Artisan Cheesemakers selection and the delicious fresh seasonal menu. Pick your own chestnuts Mar-early May.

Shed café and store open Thurs-Mon (closed Tues & Wed) 10am-4pm.

**795 Morses Creek Rd, WANDILIGONG**

**0400 061 763**

**wandifulproduce.com.au**

## **CHERRYBROOK CHERRY FARM**

Visit the farm to buy fresh cherries in kilos or boxes, or enjoy picking your own cherries straight from the tree.

Cherries available Nov-Dec, Visit in September for the stunning cherry blossoms.

**562 Jones Road, MOUNT BRUNO**

**03 040 5765 2331**

**cherryfarm.com.au**



• FEAST •





# BEECHWORTH & SURROUNDS



The Gold Rush may have shaped Beechworth and its gorgeous little sister villages of Yackandandah and Stanley but these days, they are equally famous for the quality of the wines grown from the ancient soils of the plateau, award-winning cuisine, sustainability and fresh produce ripe for the picking.

Two dozen vineyards dot the surrounding granite hills of Beechworth, where Ned Kelly and his gang once roamed. Chardonnay, shiraz and pinot of extraordinary character are produced here, several earning national and international recognition for their superb wines. Seasonal berries, apples, nuts,

vegetables, olives, citrus, honey and more are all grown in the area and appear on the menus at the many excellent cafés, pubs and restaurants. Stanley is a pick-your-own mecca in summer and autumn but any time of year is perfect for a visit to this gem of a place tucked away in the hills above Beechworth.

In a town where the locals are campaigning for 'Totally Renewable Yackandandah', Saint Monday is right at home. Sustainability is at the core of this buzzing little café where a green ethos underpins the fresh seasonal menu and a no waste philosophy. The house-made doughnuts are pretty awesome too!





## SAVOUR THE DAY!

### • BEECHWORTH •



**BILLSON'S REBORN** • A quiet revolution has been going on in Beechworth with the revival of the historic Billson's Brewery. The 1865 building now houses a barber, blacksmith, carriage museum, brewery and distillery, producing spring water bottled direct from the source, a range of traditional cordials, new small batch cordials made from seasonal fruits and herbs, sodas as well as hand-crafted ales and spirits.

**NEW LIFE IN THE OLD GAOL** • Big changes are also afoot at the Old Beechworth Gaol, whose most famous inmates included Ned Kelly himself. Take a 'Rogues, Ratbags and Mongrel Dogs' tour of this reborn historic icon, where freshly roasted Sixpence coffee, sublime cakes and delicious lunch treats are served daily in the prison courtyard from a vintage Airstream caravan.



**CHEERS TO THE BEERS!** • Bridge Road Brewers and its founder, Ben Kraus, have led the craft beer revolution for more than a decade. Life doesn't get much better than a tasting paddle of his award-winning ales and a slice of the mushroom, roasted hazelnut and thyme-topped pizza in the beer garden on a sunny day.

**WHAT'S THE BUZZ?** • Beechworth and pure, yummy honey go hand in hand. Learn all there is to know about these tireless little workers at the Beechworth Honey shop. Taste the range to help you choose which flavour to take home for your brekkie crumpets.

**TAKE A BOW** • Cap off a perfectly indulgent day with a sensational dinner at two-Hatted The Provenance. Every dish is a work of art in the hands of Beechworth's legendary chef, Michael Ryan. Fresh seasonal produce is used to perfection in the Japanese-infused dishes he creates and perfectly pairs with a wine list featuring the highly awarded vintages of local vignerons.



## TOP 5 TOUR, TASTE & TIPPLE

### • BEECHWORTH •



**1. TASTE & TREK** • A Beechworth Barrel Tour is a delectable five hour, five course progressive lunch at five of Beechworth's renowned wineries. Featuring tastings with the makers and delicious food pairings at each cellar door.

**2. FIND GOLD** • Pennyweight Wines is just on the edge of town, an easy 10 minute pedal via the Murray to Mountains Rail Trail. Taste their fine, handcrafted organic wines and treat yourself to a bottle of their superb award-winning fortified dessert wine, Pennyweight Gold.

**3. SHE'LL BE APPLES** • A beautiful lush landscape criss-crossed with fruit and nut orchards emerges from the towering gums that line the 10 minute drive (or a gorgeous road ride) up and round the bends to Stanley. From summer to autumn, head to Black Barn Farm and nearby Europa Gully Orchard to pick your own succulent berries, cherries and heritage apples.

**4. EMPIRE STRIKES BACK** • Another notable Beechworth renaissance has been the transformation of The Empire Hotel into a first-rate gastropub. Chef Shauna Stockwell delivers scrumptious Asian-infused dishes and the wine list heroes the best of the region.

**5. BLISS OUT** • After a hard day's imbibing, get into some serious relaxation at Beechworth Spa, home of blissful massages, dreamy treatments, Spa-made creams, potions and herbal teas made fresh from their gardens.



• FEAST •

### 1 BEECHWORTH BAKERY

Begin or finish your ride with a visit to the original Beechworth Bakery. Be greeted by the tantalising aroma of barista-made coffee mingled with hot-out-of-the-oven pies, pasties and bread. Fuel up with freshly made sandwiches, wraps, focaccias and rolls and, of course, check out the huge range of irresistible treats.

27 Camp St, BEECHWORTH  
1300 BEESTING (1300 233 784) • enquiries@beechworthbakery.com.au  
BeechworthBakery.com.au



### 2 BILLSON'S

Billson's is one of Australia's oldest breweries. Founded in 1865, visit the brewery museum to discover our heritage. Make your way to our tasting room to sample our artisan, small-batch premium beverages from traditional cordials and sodas, to craft beers and spirits. Unwind with delicious food and drinks in our relaxed café setting. The perfect outing for the entire family!

29 Last St, BEECHWORTH  
03 5728 1304 • info@billsons.com.au  
billsons.com.au



• BEECHWORTH •

### 3 BRIDGE ROAD BREWERS

Bridge Road Brewers boasts some of the best craft beer in Australia. The brewery, the bar and its pizza kitchen are all located in a 150-year-old coach house and stables. The brewery is hidden down a laneway leading off Ford Street, between Tanswells Hotel and the Golden Era service station, in the heart of picturesque Beechworth.

Old Coach House Ford St, BEECHWORTH  
03 5728 2703 • bookings@bridgeroadbrewers.com.au  
bridgeroadbrewers.com.au



### 4 ELDORADO ROAD CELLAR DOOR~CANTINA

Explore Eldorado Road Cellar Door~Cantina, a hidden oasis in the heart of Beechworth. In our private courtyard under the shady tortured willow or during the chilly months snuggle in front of the cosy open fire, spin some vinyl and indulge in local food and elegant wine from the family-run winery.

44-48 Ford St, BEECHWORTH  
03 5725 1698 • info@eldoradoroad.com.au  
eldoradoroad.com.au



### 5 EMPIRE HOTEL BEECHWORTH

Located in the main street of the township of Beechworth this circa-1870s pub has been reinvented. With new owners breathing a new life into an old country Victorian pub. With contemporary menus offering lunch, bar fare and dinner 7 days a week.

10 Camp St, BEECHWORTH  
03 5728 2743 • scott@empirehotelbeechworth.com.au  
empirehotelbeechworth.com.au



### 6 INDIGO VINEYARD

Superb wine and lamb. Taste a flight of wines with a free tasting plate at our 5 star-rated winery. Play bocce, ride our bike trail, kids have a special corner and can enjoy our animal nursery. Make up a delicious platter of seasonal regional produce to enjoy in our gardens. You will smile and feel yourself relaxing as you experience true country hospitality.

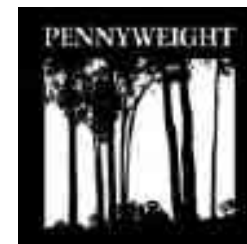
1221 Beechworth Wangaratta Rd, BEECHWORTH  
03 5727 0233 • emails@indigovineyard.com.au  
indigovineyard.com.au



### 7 PENNYWEIGHT WINERY

- Cellar door open daily
- Table and fortified wines
- Dry land vineyards
- Cyclists/walkers 1km on the rail trail.
- 4th and 5th generation Morris family
- Certified biodynamic/organic
- 5 minute drive from Beechworth PO

13 Pennyweight Ln, BEECHWORTH  
03 5729 1747 • contact@pennyweight.com.au  
pennyweight.com.au





## BREWERY, MUSEUM & TASTING ROOM

DISCOVER ONE OF AUSTRALIA'S  
OLDEST BREWERIES

EXPERIENCE OUR *rich heritage*, SAMPLE  
OUR ARTISAN CORDIALS, SMALL BATCH  
SODAS, CRAFT BEERS & PREMIUM SPIRITS  
AND UNWIND WITH *delicious food*,  
DRINKS AND *great company* IN OUR CAFÉ

Billson's Brewery 29 Last St, Beechworth, VIC  
T: 03 5728 1304 E: info@billsons.com.au  
Opening Hours: 9:00am - 5:00pm, 7 days a week  
(Including public holidays)

f @BILLSONS1865 BILLSONS.COM.AU







# BEECHWORTH HONEY

31 FORD ST BEECHWORTH | OPEN DAILY 9AM – 5.30PM


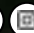


Join our free honey tour commencing every 10 minutes

See live bees up close – can you spot the queen?

Taste over 30 different varieties of delicious pure  
Australian honey – Australia's best collection



03 5728 1433 | [info@beechworthhoney.com.au](mailto:info@beechworthhoney.com.au) | [beechworthhoney.com.au](http://beechworthhoney.com.au) |  

## • BEECHWORTH •

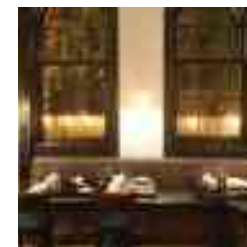
### 8 PROVENANCE RESTAURANT AND ACCOMMODATION

Provenance has been championing the food and produce of the North East for the last 10 years in its modern, regional cuisine. Paired with an overnight stay in the accommodation at the rear of the restaurant, it is a perfect way to experience the best that the North East has to offer.

86 Ford St, BEECHWORTH

03 5728 1786 • [info@theprovenance.com.au](mailto:info@theprovenance.com.au)

[theprovenance.com.au](http://theprovenance.com.au)



### 9 SAINT MONDAY

Inspired by the changing seasons, and underpinned by ecological and community values, Saint Monday transforms the bounty of local organic farms, backyard gardens and artisan manufacturers into an ever-changing array of meals, sweets, and drinks to satisfy the ethical omnivore, the vegan and the meat-lover.

26 High St, YACKANDANDAH

02 6027 1202 • [saintmondaycafe@gmail.com](mailto:saintmondaycafe@gmail.com)

[saintmondaycafe.com.au](http://saintmondaycafe.com.au)



### 10 STONETRUST SPA VILLAS

StoneTryst comprises 3 villas each designed for a couple as a luxury escape. Each villa has a deep spa bath, double shower, full kitchen, quality furniture and tranquil views over a newly planted vineyard towards the Beechworth gorge. The premium villa also has a private pool. StoneTryst is operated by the team behind the award-winning Provenance restaurant.

10 Granjaise Ln, BEECHWORTH

0401 978 951 • [stay@stonetryst.com.au](mailto:stay@stonetryst.com.au)

[stonetryst.com.au](http://stonetryst.com.au)



### 11 THE BIG HOUSE COOKING SCHOOL

Come and learn what the prisoners ate, grew and who cooked it at the Old Beechworth Gaol in the original kitchen. The stories, the characters and the recipes. A short class with lunch served after. The BiG House Cooking School also offers classes throughout the year covering different cuisines and visiting chefs.

Old Beechworth Gaol St, BEECHWORTH

0408 321 822 • [info@thebighouse.com.au](mailto:info@thebighouse.com.au)

[thebighousecookingschool.com.au](http://thebighousecookingschool.com.au)



### 12 THE HONEY SHOP BY BEECHWORTH HONEY

Discover the amazing world of Australian honey. See live bees up close, enjoy our free honey tour, taste amazing Australian honey and experience our passion.

31 Ford St, BEECHWORTH

03 5728 1433 • [info@beechworthhoney.com.au](mailto:info@beechworthhoney.com.au)

[beechworthhoney.com.au](http://beechworthhoney.com.au)





BREWED IN BEECHWORTH, VICTORIA

# BRIDGE ROAD BREWERS

BREWERY + PIZZERIA

OPEN 7 DAYS  
LUNCH 7 DAYS  
12PM - 3PM  
DINNER  
WED - SUN  
5.30PM - 8.30PM

WE ARE PROUD TO BE



Get the full story  
[WWW.BRIDGEROADBREWERS.COM.AU](http://WWW.BRIDGEROADBREWERS.COM.AU)



## DRINK BETTER DRINK CRAFT



### • BEECHWORTH •

#### 13 TOUR DE VINES

Taste sip and cycle your way on the Murray to Mountains Rail Trail and beyond with all inclusive guided and self guided cycling tours. Choose from a day tour through to 5 days, sampling the wonderful produce of North East Victoria whilst riding the fantastic rail trail.

**BEECHWORTH**  
1300 665 330 • [inquiry@tourdevines.com.au](mailto:inquiry@tourdevines.com.au)  
[tourdevines.com.au](http://tourdevines.com.au)









# BENALLA



Rich in art, history, heritage gardens and superb places to picnic, Benalla is a great place to call home for a few days while exploring the fabulous gourmet offerings of Victoria's High Country.

Food that's unpretentious and delicious is on the menu here, especially at the excellent local pubs, cosy cafés and bakeries. Chocoholics are well catered for with a store specialising in all things chocolate, while locally grown seasonal fruit and veg are available year-round at the monthly Lakeside Craft & Farmers' Market on the banks of Lake Benalla.

Don't miss the Benalla Art Gallery, one of the best in regional Australia boasting a fine

permanent collection of Australian paintings from the early 19th century to contemporary works of the 21st century and a great program of touring exhibitions throughout the year. The gallery has a fully licensed café offering local and regional wines, wicked cake and coffee.

Benalla is also the gateway to the Winton Wetlands, one of the biggest wetland restoration projects ever undertaken and a haven for many species of bird and other animals. The award-winning Mokoan Hub & Café offers fantastic views of the natural landscape, with a menu featuring locally grown food, wine, beer and cider.







**SAVOUR  
THE DAY!**

• BENALLA •



**REALLY BIG ART** • Benalla's annual Wall to Wall festival sees dozens of leading Australian and international artists descend on the town for a long weekend, creating works on a monumental scale on all kinds of buildings in and around the town. The result is a stunning outdoor gallery. Take your time to explore these amazing artworks on a guided or self-guided tour.

**PICNIC IN THE PARK** • The Benalla Botanical Gardens are a peaceful sanctuary full of heritage listed trees and stunning roses. Walk or cycle up an appetite on the lakeside loop then spread the picnic rug and soak up the serenity. Sigh.

**A LITTLE BIT OF NED** • Ned Kelly's links to Benalla are on display at the fascinating costume and pioneer museum. The collection includes the green silk cummerbund he famously wore under his armour at the Siege of Glenrowan. Ned was 11 years old when he was awarded the sash for saving a drowning boy.

**PEDAL TO LUNCH** • Pedal up an appetite on an easy 21km bike trail from Benalla to the Mokoan Hub Café overlooking the Winton Wetlands. Great coffee and breakfast and lunch menus heroing fresh seasonal produce and a deck with a view to the wetlands ideal for kicking back with an afternoon glass of a fine local wine.





# 1 MOKOAN HUB & CAFÉ

Begin or end your visit to the Wetlands at the Mokoan Hub & Café – fully licensed with an extensive menu and family-friendly. This not-for-profit business is committed to supporting the ongoing restoration of the Wetlands habitat. Winner of the National Sustainable Building Award in 2016, the café is also a memorable venue for celebrating or doing business.

652 Lake Mokoan Rd, CHESNEY VALE  
0497 939 507 • [info@wintonwetlands.org.au](mailto:info@wintonwetlands.org.au)  
[wintonwetlands.org.au](http://wintonwetlands.org.au)







# MOKOAN HUB & CAFÉ

@ WINTON WETLANDS

Start or end your exploration of Winton Wetlands with a visit to the Mokoan Hub & Café – fully licensed with an extensive menu and family friendly. Work up an appetite by jumping on the 40 metre flying fox, or take a walk, bike ride or a paddle to discover the huge variety of flora and fauna being welcomed back to the site through restoration efforts. Ask the welcoming Hub staff about seasonal and daily highlights, as well as the best places to point your camera or binoculars for brilliant wildlife and bird spotting. Located 15 minutes from Benalla and 25 minutes from Wangaratta.

Open 7 days | 9am-4pm  
652 Lake Mokoan Road, Chesney Vale 





# BRIGHT & SURROUNDS



Nestled at the foot of the Australian Alps and watered by the Ovens and Kiewa Rivers, Bright, and its surrounding valley villages of Porepunkah, Myrtleford, Harrietville and Mount Beauty are the total getaway package.

Pretty as a picture whatever the season, there are outstanding views of snow-capped mountains in winter, and in autumn the avenues of century-old trees light up in a stunning blaze of colour.

There is a depth of history here too. The legacy of the fortune hunters who flocked to the goldfields, the pastoralists who came to

farm the fertile riverlands and the post-war Italian migrants who found refuge here are still evident in the mining relics, the vineyards, tobacco kilns and the productive farms of the region.

Locally produced beef, trout, milk, nuts, olives, berries, asparagus, tomatoes, citrus, hops and grapes feature on the menus of the many excellent restaurants, cafés, breweries and cellar doors in Bright, with its sophisticated dining scene - and in each of the surrounding villages and the lush countryside in between.



## SAVOUR THE DAY!



**SING A SONG OF SIXPENCE** • Sixpence Pocket Full of Rye is Bright's own small batch roastery and sourdough bakehouse, and, so good, and so popular are the coffees and the super-delicious house-made pastries, artisan breads and melt-in-your-mouth toasties, they've opened a second very cool place called Sixpence at 15 Wills Street. Just go.

**GIN PLEASE** • Many tears were shed when Hatted chefs Hamish Nugent and Rachel Reed closed the doors on their award-winning Tani Eat & Drink. But it's happiness all round now this talented pair has returned to Bright's gourmet scene with their intimate bar and eatery, Reed & Co Distillery at 15 Wills Street. Here their magnificent house-distilled Remedy Gin is the hero, the perfect match to their seriously good food.

**PEDAL TO PRODUCE** • This area is built for cycling with the famous Murray to Mountains Rail Trail hugging the Ovens Valley all the way from Wangaratta to Bright. Sealed and mostly flat, the trail offers an easy and scenic way to explore this beautiful region.

From Bright there's a side trail that follows Morse's Creek to the beautiful, hidden valley of Wandiligong, an 11km return cycle ride. Pick up a Pedal to Produce map from the Visitor Information Centre and spend some time exploring the heritage-listed Gold Rush village. Don't miss the Chinese Swing Bridge and Diggings Walk, the Wandi Maze and orchards with farm gates offering chestnuts and apples in season.



**FOOD WITH A VIEW** • An al fresco lunch at Feathertop Wines is one of the High Country's great summer pleasures. Gobsmacking views of Mt Buffalo, lush vine-studded surrounds and big old shady trees set the scene for a lazy afternoon indulging in beautifully cooked local produce and delicious wines from the cellar door.

**ALES FOR ALL MY FRIENDS!** • A local institution and leading light of the High Country Brewery Trail, Scott Brandon's award-winning Bright Brewery opens to a riverside beer garden second to none. Dig in for a delicious long lunch or dinner and taste the excellent range produced locally.



## TOP 5 TOUR, TASTE & TIPPLE



**1. BILLY BUTTON** • Jo Marsh is a passionate and highly decorated winemaker whose philosophy is for her Billy Button wines to make people laugh and smile. This she does with gusto and aplomb. Discover her intimate cellar door in Wills St, where people can often be seen laughing and smiling.

**2. PEDAL AND TASTE** • The panoramic vistas of Mount Buffalo from Ringer Reef winery are best reached via an e-bike from Bright. Follow the Murray to Mountains Rail Trail to Porepunkah and hit POWER for the steep climb up to the cellar door. Be rewarded with great wines to taste while you drink in the views.



**3. COOK, CYCLE, FEAST** • Take a Rolling Gnocchi experience with Myrtleford Cycle Centre, learning the art of making authentic gnocchi with Roberto of Café Delizie, then pedal to local farm gates like the Australian Pumpkin Seed Co and cellar doors including Michelini and Gapsted wineries, returning just in time for a sensational lunch Italian style.

**4. GINGER BAKER WHO?** • Not just a famous guitarist, but also an all day cute-as-a-button wine bar and café on the banks of the Ovens. Great breakfast, great lunch, great bar, great vibe.

**5. A MYRTLEFORD OASIS** • Myrtleford's undergoing a quiet foodie revolution that started with Café Fez. Housed in an amazing middle eastern bazaar and serving great food from that region, this is a very cool little oasis for daily breakfast and lunch and Friday night dinner and banquets.



#### 1 ALPINE CELLARS

With over 150 wines, Alpine Cellars has the largest selection of local wine, craft beer and cider in the region. Blessed with five significant wine regions, Victoria's North East is a mecca for wine and beer lovers. Conveniently located on the Great Alpine Road, visit Alpine Cellars for tastings, wine tours, great value specials and more!

**2 Delany Av, BRIGHT**  
**03 5755 1309 • drink@alpinecellars.com.au**  
**alpinecellars.com.au**



#### 2 ALPINE VALLEY GETAWAYS

Alpine Valley Getaways is your one-stop destination for creating your perfect Bright and surrounds getaway. Offering a wide range of hand-picked and personally managed holiday homes across the region, we have something for every traveller. Our friendly and knowledgeable local team is ready to guide you to your ideal escape from start to finish or simply book online.

**11 Wills St, BRIGHT**  
**03 5759 2555 • book@alpinevalleygetaways.com.au**  
**alpinevalleygetaways.com.au**



#### 3 AUSTRALIAN PUMPKIN SEED COMPANY

Visit The Artisan Mill, home of Australia's only pumpkin seed company where you can see how the pumpkin is grown and harvested to produce tasty seeds, oils and flours for you to enjoy on their own or in many exciting recipes. Taste and buy from the farm shop a range of delicious specialty products including our famous chocolate coated pumpkin seeds.

**5061 Great Alpine Rd, OVENS**  
**03 5752 1199 • sales@pumpkinseed.net.au**  
**pumpkinseed.net.au**



#### 4 BILLY BUTTON WINES

The Billy Button Cellar Door is conveniently located in the centre of Bright and offers complimentary wine and cheese tasting, wines by the glass and bottle sales of Billy Button as well as other small local producers. Stop by and enjoy a delicious cheese platter, or make a selection from our extensive range of artisan cheese and smallgoods to take home.

**11 Camp St, BRIGHT**  
**03 5755 1569 • cellardoor@billybuttonwines.com.au**  
**billybuttonwines.com.au**



#### 5 BRIGHT BREWERY

Bright Brewery is a solar powered brewery, bar and restaurant located alongside the Ovens River in the heart of beautiful Bright. Relax with a mountain crafted beer while you watch the brewers in action. Enjoy a tasting tray, local wine and cider, coffee and hearty meals. Tours Monday, Fridays, Saturdays. Live music every Sunday. Brewer For A Day program. Free WiFi.

**121 Great Alpine Rd, BRIGHT**  
**03 5755 1301 • operations@brightbrewery.com.au**  
**brightbrewery.com.au**



#### 6 BRIGHT ESCAPES

Bright Escapes and Bright Visitors Centre is an established premier booking agency in Bright, specialising in accommodation, weddings, tours and events. With a vast range of accommodation options from holiday homes, self-contained units, apartments and B&Bs, we cater for cyclists, couples, families and pets. Escape to Bright today!

**5/6 Anderson St, BRIGHT**  
**1300 551 117 • info@brightescapes.com.au**  
**brightescapes.com.au**



#### 7 BUFFALO MOTEL RETREAT

Iconic High Country motel on 5 acres of landscaped alpine gardens. 20 fully renovated ensuite rooms with standalone common lounge area. Ovens River and Mount Buffalo views from timber deck with BBQ facilities. Cycle, walk or drive to local wineries, breweries, gin distillery and restaurants. Mount Hotham, Falls Creek, Mount Buffalo for skiing, snowboarding, cycling, fishing, bushwalking and sightseeing activities.

**6774 Great Alpine Rd, POREPUNKAH**  
**03 5756 2242 • stay@buffalomotelretreat.com.au**



#### 8 CAFÉ FEZ MYRTLEFORD

Open 7 days a week for breakfast and lunch, and Friday nights for dinner, Café Fez presents a unique atmosphere. Featuring a menu of Middle Eastern cuisine, a 100-mile wine list, a quixotic array of cocktails and exceptional coffee, this little gem is the perfect place to eat, drink, relax and chill out.

**145 Great Alpine Rd, MYRTLEFORD**  
**03 5751 1155 • caféfez@redramia.com.au**  
**redramia.com.au**



#### 9 CHRISTINA'S LUXURY RETREAT

Christina's is a fresh take on luxury accommodations in Bright. Be treated to magnificent views across the Ovens Valley from the generous entertaining deck, beautiful mineral salt water swimming pool and the most indulgent master bedroom. Newly built, the space is contemporary and furnishings are stunning. Christina's has 4 bedrooms and sleeps 8 guests.

**10 Ballroom Dr, BRIGHT**  
**0411 874 798 • stay@leaderreef.com.au**  
**leaderreef.com.au/christina-s-retreat**



#### 10 DINNER PLAIN ALPINE VILLAGE

From Australia's highest brewery to gourmet restaurants and home style cafés, you'll want to experience alpine hospitality in a true mountain village. Cool summers and cosy warm winters fireside watching the snowfall. One hour from Bright, ten minutes from Hotham.

**The Great Alpine Rd, DINNER PLAIN**  
**info@visitdinnerplain.com.au**  
**visitdinnerplain.com.au**





#### 11 FEATHERTOP WINERY

Feathertop Winery is a family owned winery, renowned for their award-winning cool climate wines. Cellar door tastings are available Friday, Saturday and Sunday or by appointment for members. Come in for lunch in our Stone & Barrel Restaurant that boasts beautiful mountain views and a menu featuring fresh seasonal, local produce. Playground also on-site.

**6619 Great Alpine Rd, POREPUNKAH**  
**03 5756 2356 • [experience@boynton.com.au](mailto:experience@boynton.com.au)**  
**[feathertopwinery.com.au](http://feathertopwinery.com.au)**



#### 12 GAPSTED WINES

Gapsted Wines is just 5 minutes from Myrtleford and conveniently situated on the Murray to Mountains Rail Trail. Open 7 days for wine tasting, espresso coffee and an a la carte menu featuring seasonal local produce, all overlooking the vineyards and sweeping Alpine Valley. Visit their website for details on regular events such as long lunches and wine sales.

**3897 Great Alpine Rd, GAPSTED**  
**03 5751 9100 • [cellardoor@gapstedwines.com.au](mailto:cellardoor@gapstedwines.com.au)**  
**[gapstedwines.com.au](http://gapstedwines.com.au)**



#### 13 GINGER BAKER CAFÉ

Positioned adjacent the Ovens River in Bright, Ginger Baker Café and wine bar offers its guests garden and nature views. Open for breakfast and lunch 7 days; dinner Friday and Saturday. We offer a healthy and well-crafted selection of dining choices including: quality breakfast and seasonal share-plates (for lunch and dinner).

**127 Gavan St, BRIGHT**  
**03 5755 2300 • [gingerbakerbright@gmail.com](mailto:gingerbakerbright@gmail.com)**  
**[gingerbaker.com.au](http://gingerbaker.com.au)**



#### 14 MICHELINI WINES

Celebrating 150 years of award-winning premium Italian wines, grown in the pristine cool climate Buckland Valley. Michelini Wines welcomes you to their cellar door in the picturesque Alpine Valleys town of Myrtleford.

**213 Great Alpine Rd, MYRTLEFORD**  
**03 5751 1990 • [sales@micheliniwines.com.au](mailto:sales@micheliniwines.com.au)**  
**[micheliniwines.com.au](http://micheliniwines.com.au)**



#### 15 MILCH CAFÉ BAR

Locally sourced menu, home baked treats, beautiful wines and gorgeous food. Family friendly, cosy atmosphere, lovely locals.

**4 Schuss St, FALLS CREEK**  
**03 5758 3407 • [milchcafébar@gmail.com](mailto:milchcafébar@gmail.com)**



A motel for all seasons. Soak in views of Mount Buffalo and Ovens River from the deck and grounds. Fully renovated ensuite rooms, guest lounge and dining room are ideal for romantic getaways, family and friends gatherings, weddings, sports and club interest events, Probus Groups and tours of NE Victoria Gourmet Food and Wine Country. Easy access to Mountain to Murray cycling track.

Contact Cherie  
**+613 57562242**

Online booking:  
**[www.buffalomotelretreat.com.au](http://www.buffalomotelretreat.com.au)**

#### SPECIAL OFFER:

Stay 4 nights and pay for only 3. Bookings must be directly with Buffalo Motel to obtain this offer by calling 03 5756 2242 (subject to availability). Book by 31 March 2019 for stays up to Dec 31, 2019 excluding public holidays and festival periods. No other discounts applicable.





• FEAST •

**16 MT BUFFALO OLIVES**

Mt Buffalo Olives is a working olive grove, nestled into the foot of Mount Buffalo, renowned for our award-winning Extra Virgin Olive Oil, table olives and a range of products handcrafted from the fantastic local produce. Come and taste!

**307 Mount Buffalo Rd, POREPUNKAH**  
**03 5756 2143 • info@mtbuffaloolives.com.au**  
**mtbuffaloolives.com.au**



**17 MYRTLEFORD CYCLE CENTRE**

COOK\*CYCLE\*FEAST! Join a bicycle tour around Myrtleford discovering local food and wine secrets. Start with a hands-on cooking lesson or food experience, such as making authentic Italian gnocchi, picking fresh berries or roasting coffee beans. Next, pedal your bicycle an easy 5-10km to nearby food producers and wineries, collecting items for the feast!

**59A Clyde St, MYRTLEFORD**  
**03 5752 1511 • info@myrtlefordcycle.com**  
**myrtlefordcycle.com**



# BRIGHT BREWERY

MountainCrafted.

SEASONAL BEERS | LIVE MUSIC  
LOCAL PRODUCE | BIKE PARKING

@BRIGHTBREWERY

121 GREAT ALPINE ROAD, BRIGHT VIC 3741 | 03 5755 1301  
 INFO@BRIGHTBREWERY.COM.AU | WWW.BRIGHTBREWERY.COM.AU

• BRIGHT AND SURROUNDS •

**18 NIGHTINGALE BROS ALPINE CIDER & PRODUCE**

The Nightingale family has been growing juicy alpine apples in the historic Wandiligong valley since 1954. Visit their orchard store to stock up on seasonal produce and try their range of handcrafted ciders and sparkling juices, naturally made using hand-picked apples which have been cold-pressed to create a crisp, refreshing cider with low residual sugar.

**708 Morses Creek Rd, WANDILIGONG**  
**03 5755 1318 • admin@nightingalebros.com.au**  
**nightingalebros.com.au**



**19 REED & CO DISTILLERY**

Reed & Co Distillery is a family owned and operated distillery, bar and restaurant. They are the makers of Remedy Gin. The intimate and casual Cocktail Bar welcomes guests to enjoy the gin-inspired bar and dinner menu. The food menu is created around an impressive custom-built solid fuel oven and grill, along with the botanicals of Remedy Gin.

**15 Wills St, BRIGHT**  
**03 5750 1304 • hello@reedandcodistillery.com**  
**reedandcodistillery.com**



**20 SIXPENCE COFFEE**

Sixpence Coffee is our family owned and run small batch coffee roastery. Our shared location offers a unique and exciting retail space to talk coffee, buy beans or settle in with a latte and something from our delicious selection of cakes and pastries.

**15 Wills St, BRIGHT**  
**0423 262 386 • info@sixpencecoffee.com.au**  
**sixpencecoffee.com.au**



**21 SPRING SPUR**

Spring Spur is home to Bogong Horseback Adventures, offering rides on renowned home-bred horses, layered with country hospitality. Our farmhouse food style features seasonal produce from our kitchen garden and orchard, handmade artisan wines and regional goodies with influences from our homestead kitchen and our expedition meals cooked on High Country campfire coals, peppered with mountain spices and woodsmoke.

**52 Fredas La, TAWONGA**  
**info@springspur.com.au**  
**springspur.com.au**



**22 THE KILNHOUSES**

A stay at any one of the 3 Kilnhouses is a unique experience. A modern take on Ovens Valley tobacco kilns; each house offers space, luxury, inspiration and rest. The option for cooking classes and Verdelho and Prosecco from the kilnhouse vines adds a gastronomic dimension balanced by a ride on one of the Chapelli bikes supplied.

**Cavedons Ln, POREPUNKAH**  
**0422 175 345 • stay@kilnhouse.com.au**  
**kilnhouse.com.au**







• BRIGHT AND SURROUNDS •



## Ringer Reef Winery

6835 Great Alpine Road, Porepunkah

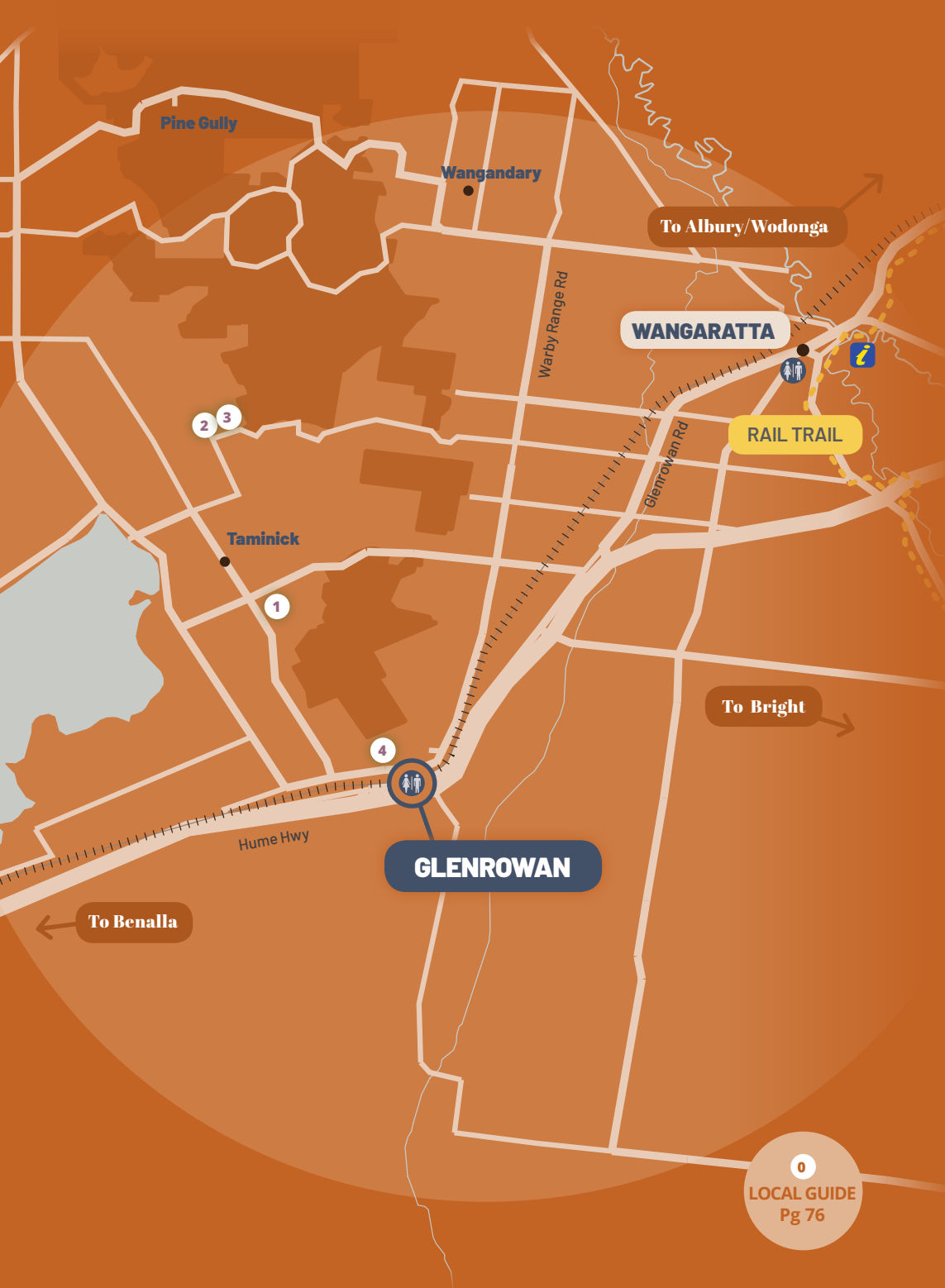
Open for tastings and sales

12 - 5pm daily

[www.ringerreef.com.au](http://www.ringerreef.com.au)



# GLENROWAN



Famously the site of the siege that brought the Kelly Gang undone, these days there's much more to Glenrowan than Australia's most celebrated bushranger.

Vines were first planted by the Bailey family on the slopes of the Warby Ranges more than 140 years ago, and local legend has it that before things went pear-shaped, Ned found work there as a fencing contractor.

Since those heady days, Glenrowan has become equally famous for its rich, robust reds, especially shiraz, fragrant whites and excellent fortifieds. Cellar doors in this part of the world are historic, warm and hospitable. At Taminick don't miss a visit to Black Dog Brewery, one of the eight microbreweries

crafting quality ales found the length and breadth of the High Country.

Combine a tasting tour with a visit to local farm gates selling succulent summer berries, jams and ice-cream as well as sun-ripened, juice-filled peaches and nectarines like you've never tasted.

Glenrowan is also a magical place for nature lovers and twitchers. The Warby-Ovens National Park offers habitat to many species of mammal and forest birds. Grab the binoculars, head for the hills, hike the trails and soak up the majestic views from picturesque picnic places and vantage points where the wild colonial boys once roamed.



## SAVOUR THE DAY!



**IMBIBE HISTORY** • Lunch and tastings at the historic Baileys of Glenrowan is a treat any time of the year. Nestled into the Warby Ranges the 57 hectare property is fringed by the Winton Wetlands, offering beautiful views and a warm welcome at the historic cellar door. Vines were first planted here in 1870 and these days the wines are certified organic. Baileys is famous for its excellent durifs and internationally awarded fortifieds. Enjoy guided tastings and don't miss the excellent wood fired pizza and grazing plates.

**WETLANDS** • Help one of Australia's most significant conservation projects by dining at the award-winning not-for-profit Mokoan Hub Café. Every dollar spent helps habitat restoration of the Winton Wetlands. The excellent menu has seasonal choices for breakfast and lunch and a wine list showcasing a range of fine local drops from Glenrowan and other High Country makers.



**GO WILD** • Glenrowan is famous for the beauty of its natural environment, surrounded by national park and just a stone's throw from the Winton Wetlands, home to many species of native birds. Discover magical waterfalls, spectacular views and landscapes offering habitat to wildlife along the Wild Harvest Trail, a progressive picnic around the foothills of the Warbys. Collect a hamper stocked with fresh seasonal produce and matched wines and beer from the four wineries - Baileys, Auldstone, Taminick and Morrisons and craft brewery Black Dog - of the Glenrowan region.



## TOP 5 TOUR, TASTE & TIPPLE

### THE ICONICS & THE NEW REGIME ON THE BLOCK

#### 1. TAMINICK CELLARS •

##### *PREMIUM SHIRAZ 2015*

Crafted from fruit from aged vines nearly 100 years old, this wine was fermented in open vats, hand plunged then matured in new and seasoned American oak for over 12 months. Dark red black with aromas of blueberry fruit characters which are given complexity by liquorice, spice and vanilla cedar notes and carry through onto the palate with ripe rounded tannins on the long, dry finish.

#### 2. BAILEYS OF GLENROWAN •

##### *1920S BLOCK SHIRAZ 2015*

Sourced from a single, dry-grown vineyard planted in the 1920s, the nose has fragrant raspberry and blackberry fruit, hints of ground spice and savoury elements of earth and ironstone. Ripe, red black fruits up front with darker hints of liquorice and aniseed on the palate.

#### 3. AULDSTONE CELLARS •

##### *CABERNET SAUVIGNON 2015*

Handcrafted to produce a big, flavoursome wine. Aged 12 months in French oak, this wine shows aromas of tobacco leaf and sun dried tomatoes with a layer of blackcurrant fruit. It has a soft, lingering finish and will continue to mature for six to eight years.



#### 4. MORRISONS OF GLENROWAN •

##### *TEMPRANILLO 2017*

A medium bodied wine that exemplifies the freshness potential of wines from the region. With crunchy acidity, sour cherry, plum and strawberry notes it also delivers lifted notes of lavender, honey, chewing tobacco, bitter chocolate and oregano. A wine for all seasons and varied meal matches.

#### 5. BLACK DOG BREWERY •

##### *DRIFTER LAGER*

The Drifter is a new world lager based on a German lager. Hopped with Aussie Enigma and local Topaz grown by HPA at Rostrevor Hop Gardens in the Ovens Valley and has combined pilsner and Carapils malt along with a touch of malted wheat. An easy drinking beer with low bitterness, sure to soothe and refresh.



#### 1 BAILEYS OF GLENROWAN

Baileys of Glenrowan are one of the pioneers of winemaking in North East Victoria. Drawing from century-old organic vineyards, they are renowned for full-flavoured red and luscious fortified wines. Taste their award-winning range in the atmospheric cellar door, or graze on wood-fired pizza and rustic fare from the Old Block Café, open Friday through Sunday from 12 noon.

**779 Taminick Gap Rd, GLENROWAN**  
**03 5766 1600 • [cellardoor@baileysofglenrowan.com](mailto:cellardoor@baileysofglenrowan.com)**  
**[baileysofglenrowan.com.au](http://baileysofglenrowan.com.au)**



#### 2 BLACK DOG BREWERY

Black Dog Brewery is a craft brewery located at Taminick Cellars winery near Glenrowan in North East Victoria. Our beers are hand-crafted on-site from premium malted barley, hops sourced locally and globally, selected yeast strains and pure Warby Range water. We brew a range of ales and lagers year-round, based on traditional techniques.

**339 Booth Rd, TAMINICK**  
**0408 577 916 • [info@blackdogbrewery.com.au](mailto:info@blackdogbrewery.com.au)**  
**[blackdogbrewery.com.au](http://blackdogbrewery.com.au)**



#### 3 BOOTHS TAMINICK CELLARS

Taste Taminick Cellars full-bodied reds, flavoursome whites and luscious fortified wines from estate grown vines dating back to 1919. Take in the views from the century-old winery, try a handcrafted beer from the on-site brewery or enjoy a restful stay in the winery B&B. Truly a destination not to be missed.

**339 Booth Rd, TAMINICK**  
**03 5766 2282 • [jennifer.booth@taminickcellars.com.au](mailto:jennifer.booth@taminickcellars.com.au)**  
**[taminickcellars.com.au](http://taminickcellars.com.au)**



#### 4 MORRISONS OF GLENROWAN

Morrison's of Glenrowan vineyard, winery and mudbrick cellar door are set on the easterly slopes of Mt Glenrowan with views to the Victorian Alps and 2kms from the Ned Kelly siege site. Stunning red and white table wines are estate produced. Housemade sauces, jams, cured olives and pickled walnuts, Classic Muscat, Grand Tawny available. Tastings/sales daily.

**20 Kays Ln, GLENROWAN**  
**03 5766 2734 • [info@morrisonswinery.com.au](mailto:info@morrisonswinery.com.au)**  
**[morrisonswinery.com.au](http://morrisonswinery.com.au)**











# KING VALLEY & MILAWA GOURMET REGION



The rich alluvial soils of the Ovens and King Rivers are the real wealth of these regions and the secret of their bounty.

In the area known as the Milawa Gourmet Region with the villages of Oxley and Milawa at its heart, a fantastic array of food is produced, and plated, at excellent local cafés and cellar doors and the superb Patricia's Table at Brown Brothers Winery.

Artisan goat cheeses, olives, walnuts, organic goat, mustards and locally baked bread are all a product of this fertile plain.

Italian families arrived in the King Valley in

the years after World War II, bringing with them long-held traditions of winemaking and regional cuisines. Today this picturesque valley boasts many wineries producing award-winning proseccos, sangioveses and other Italian-heritage varietals.

Take some time to explore a sophisticated dining culture and the warm embrace of Italian hospitality at the many cellar doors, cafés, gastro pubs and restaurants from Milawa to the Oxley Flats, through Moyhu to Cheshunt and Whitfield – the length and breadth of this blessed valley.



## SAVOUR THE DAY!



**FLOATING ON BUBBLES** • A sunrise balloon flight above the lovely vine-covered valley landscape is a joyful thing. Greet the day with a bird's eye view from the basket of a hot air balloon then come down to earth for a delicious Brown Brothers prosecco breakfast. Stay for lunch at award-winning Patricia's Table restaurant, where the vibe is relaxed and the food and wine simply outstanding.

**A NEW BREED** • At the foot of a little mountain, on the banks of the King River at Edi Cutting, one of the High Country's prettiest places to camp, is a small winery making big waves for its range of lesser-known southern Italian varietals. The King River Estate cellar door setting is dreamy and perfect for a lazy afternoon tasting the valley.

**CHEESE PLEASE** • Some of the best cheese in Australia has been crafted right here. David and Anne Brown set up the Milawa Cheese Co 30 years ago winning a multitude of fans and awards for their sublime Milawa Blue and Milawa Gold. Taste the range of cow and goat milk cheeses then fill the boot or the panniers with these mouthwatering morsels.

**SIMPLICITY & STYLE** • Dal Zotto and Chrismont wineries are family-run affairs each offering unique cellar door experiences. The rustic Trattoria at Dal Zotto is quintessentially Italian, complete with sensational food, wine and even bocce for a post-prandial game. At the end of the valley, Chrismont's swank, architectural masterpiece offers sweeping views and traditional Sicilian cuisine to match the excellent wines.

**HEAVEN ON A BIKE** • There's a sealed, totally flat 18km return branch of the Murray to Mountains Rail Trail from Wangaratta leading straight to the heart of the gourmet region in Milawa. Food-loving cyclists can easily pedal to the many farm gates, cellar doors and cafés in this lovely fertile region, smack in the middle of the King and Ovens valleys.

**DOWN BY THE RIVERSIDE** • The Italian dining experience isn't just confined to the King Valley. Right by the river in Wangaratta, Rinaldos Casa Cucina is an award-winning restaurant dishing up wholesome home-style Italian goodness on a plate. Cento di questi giorni!



## TOP 5 TOUR, TASTE & TIPPLE



**1. SALUTE!** • Discover the spirit of la dolce vita in the King Valley, where food, wine and family are celebrated traditions. Follow the Prosecco Road to experience first-hand a delicious gourmet trail taking in wineries offering charming cellar door tastings and authentic Italian cuisine.

**2. NEW BREW** • In the heart of the valley, King River Brewing opens on weekends for beer loving roadtrippers. Husband and wife team Nathan and Brianna Munt make delicious, full flavoured beers at their brewery housed in a converted tobacco shed where the region's tobacco growing history is on display.

**3. FESTIVAL FOR A QUEEN** • Winter is welcomed in spectacular style across the Queen's Birthday Weekend when hot air balloons rule the skies. King Valley and Milawa wineries pull out all stops to welcome visitors with music, regular balloon flights, mulled wines to ward off the winter chill, great food and an incredible Night Glow show of massed hot air balloons floating in the night sky.



**4. SMOKIN' HOT** • Felix Gamze's prosciuttos, hams and salamis are legendary, made by hand with love from free range pigs, free of chemical preservatives and naturally wood smoked. Now the family has opened a smokehouse door and restaurant smack in the middle of Milawa. Drop by for some tasty treats for a picnic or settle in for some delectable dude food at the restaurant.

**5. JOHN GEHRIG** • One of Victoria's oldest winemaking families is still going strong, with fifth generation Ross Gehrig now at the helm of the winery his father began in Oxley (as well as his 80ha estate at Gooramadda near Rutherglen).



## PACK A PICNIC



With plenty of places to pick up supplies and scenic spots galore, the King Valley and Milawa area is picnicking paradise! Swing into a cellar door, collect some fresh supplies from the many local producers (cheese anyone?) and seasonal farm gates, and find a spot to relax and enjoy the region's bounty. Some of the best spots need to be discovered in your own travels, but we've given you a couple of local tips:

**LAKE WILLIAM HOVELL** • 18km from Cheshunt at the southern end of the King Valley, Lake William Hovell is the perfect spot to cool off in summer. Throw in a fishing line and lay out the picnic rug - an afternoon is well spent here.

**PIONEER BRIDGES, EVERTON** • On the banks of the Ovens River, this shady spot is popular with campers, swimmers and fisherfolk. Got your four-legged friend with you? Dogs are also welcome here.

**JOHN GEHRIG WINES** • This pretty spot by the King River is made for leisurely afternoons. Bring your locally-sourced picnic supplies and settle in with a bottle from their cellar door - heaven!

**OXLEY MEMORIAL PARK** • Kids getting a little restless? Stop off at Oxley to tucker them out at the playground while you savour a DIY local feast.



• FEAST •

**1 BROWN BROTHERS**

The Brown Family have been making wine for over 130 years and while tradition remains important to us, we're not a traditional wine company. We make over 50 wines, with styles such as Prosecco, Pinot Grigio and Montepulciano, so you can discover something new. Enjoy delicious local dishes from Patricia's Table Restaurant and Wine Bar or just relax on a beanbag in the picturesque grounds.

**239 Milawa-Bobinawarrah Rd, MILAWA**  
**03 5720 5547 • info@brownbrothers.com.au**  
**brownbrothers.com.au**



**2 CASA LUNA GOURMET ACCOMMODATION**

A stay at Casa Luna is classic pleasure – lovely rural views, restful spaces, personalised service, delicious food – cooked-to-order breakfasts, wine-matched dinners inside the stunning glass-walled dining room, or alfresco in La Piazza, the wood-fired kitchen/dining space. Four self-contained stylish suites, perfect for individual couples as well as for group events.

**1569 Boggy Creek Road Rd, MYRRHEE**  
**03 5729 7650 • indulge@casaluna.com.au**  
**casaluna.com.au**



**3 CHRISMONT CELLAR DOOR, RESTAURANT AND LARDER**

Chrismont's award-winning culinary centrepiece offers generous family hospitality and an impressive selection of European varietal wines across the Chrismont, La Zona and Riserva collections. The seasonal restaurant menu is inspired by Italy's north and south and designed for a quick bite or leisurely lunch. Visitors will also appreciate the contemporary interior, sophisticated architecture and magnificent views of the region.

**251 Upper King River Rd, CHESHUNT**  
**03 5729 8220 • info@chrismont.com.au**  
**chrismont.com.au**



**4 DAL ZOTTO WINES**

Experience genuine Italian family hospitality at the Dal Zotto Wines Cellar Door and Trattoria seven days a week in the heart of the King Valley. The Dal Zotto family live the true "la dolce vita" lifestyle and encourage guests to join them in celebrating the beauty in every day, with a glass of Prosecco in hand.

**4861 Main Rd, WHITFIELD**  
**03 5729 8321 • info@dalzotto.com.au**  
**dalzotto.com.au**



**5 GAMZE SMOKEHOUSE**

A casual dining restaurant within one of the earliest buildings in the area, a converted 150-year-old tractor garage. Using Gamze Smokehouse products and local produce to create mouth-watering pizzas, burgers, ribs and unique specials. The bar serving local craft beer and wines. The 'Smokehouse Door' featuring smallgoods available for tastings and retail purchase.

**Shop 1, 1594 Snow Rd, MILAWA**  
**03 5722 4253 • brendan@gamzesmokehouse.com.au**  
**gamzesmokehouse.com.au**



Adam Pizzini's seasonal menu reflects  
a pride + passion for local produce  
+ Italian home style cooking.

Welcome to our Casa Cucina.

56 Faithfull St Wangaratta

03 5721 8800

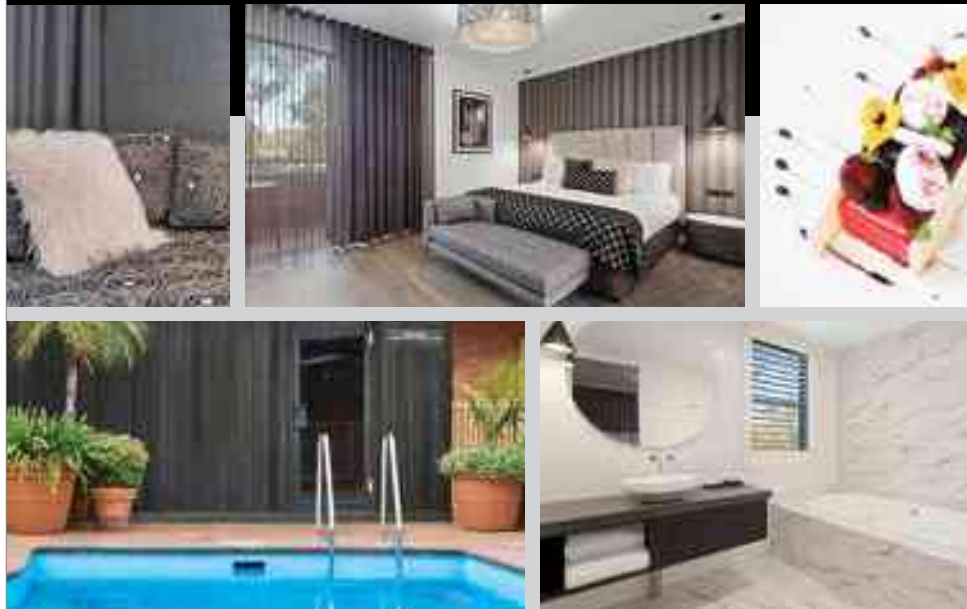
rinaldos.com.au

open Tue to Sat from 11.30am

ESTABLISHED 2006  
**RINALDOS**  
CASA CUCINA



# QUALITY HOTEL GATEWAY WANGARATTA



## Perfectly positioned.

Our AAA rated 4.5 star hotel offers 77 luxury suites and apartments, state of the art facilities, heated pool, spa, sauna, gym, undercover carpark and the signature restaurant Atrium.

Stay, dine meet, celebrate and explore.

**Our award winning team look forward to welcoming you.**

29-37 Ryley Street Wangaratta | T. 03 5721 8399  
E. [info@wangerattagateway.com.au](mailto:info@wangerattagateway.com.au)  
[wangerattagateway.com.au](http://wangerattagateway.com.au)

## • KING VALLEY & MILAWA GOURMET REGION •

### 6 GLENMORE SPRINGS ACCOMMODATION

Offering 3 diverse accommodations with picturesque and tranquil surroundings. Close to the King River, King Valley wineries, Lake William Hovell and nestled just below Power's Lookout. Our historic King Valley Kiln for a stay with a difference, The Farmhouse and Rosina's. All fully self-contained and very comfortable. Walking/ nature tracks on the farm.

**794 Upper King River Rd, CHESHUNT**  
**03 5729 8365 • [marcomartinelli@bigpond.com](mailto:marcomartinelli@bigpond.com)**  
**[glenmoresprings.com.au](http://glenmoresprings.com.au)**



### 7 JOHN GEHRIG WINES

Five generations of family winemaking combine tradition and innovation into the award-winning range of sparkling, white, red and fortified wines. Come and try these premium wines in 2 locations in North East Victoria: King Valley and Rutherglen. So come and meet the Gehrig family!

**80 Gehrigs Ln, OXLEY**  
**03 5727 3395 • [wines@johngehrigwines.com.au](mailto:wines@johngehrigwines.com.au)**  
**[johngehrigwines.com.au](http://johngehrigwines.com.au)**



**LOCATED IN  
THE HEART OF THE  
KING VALLEY**

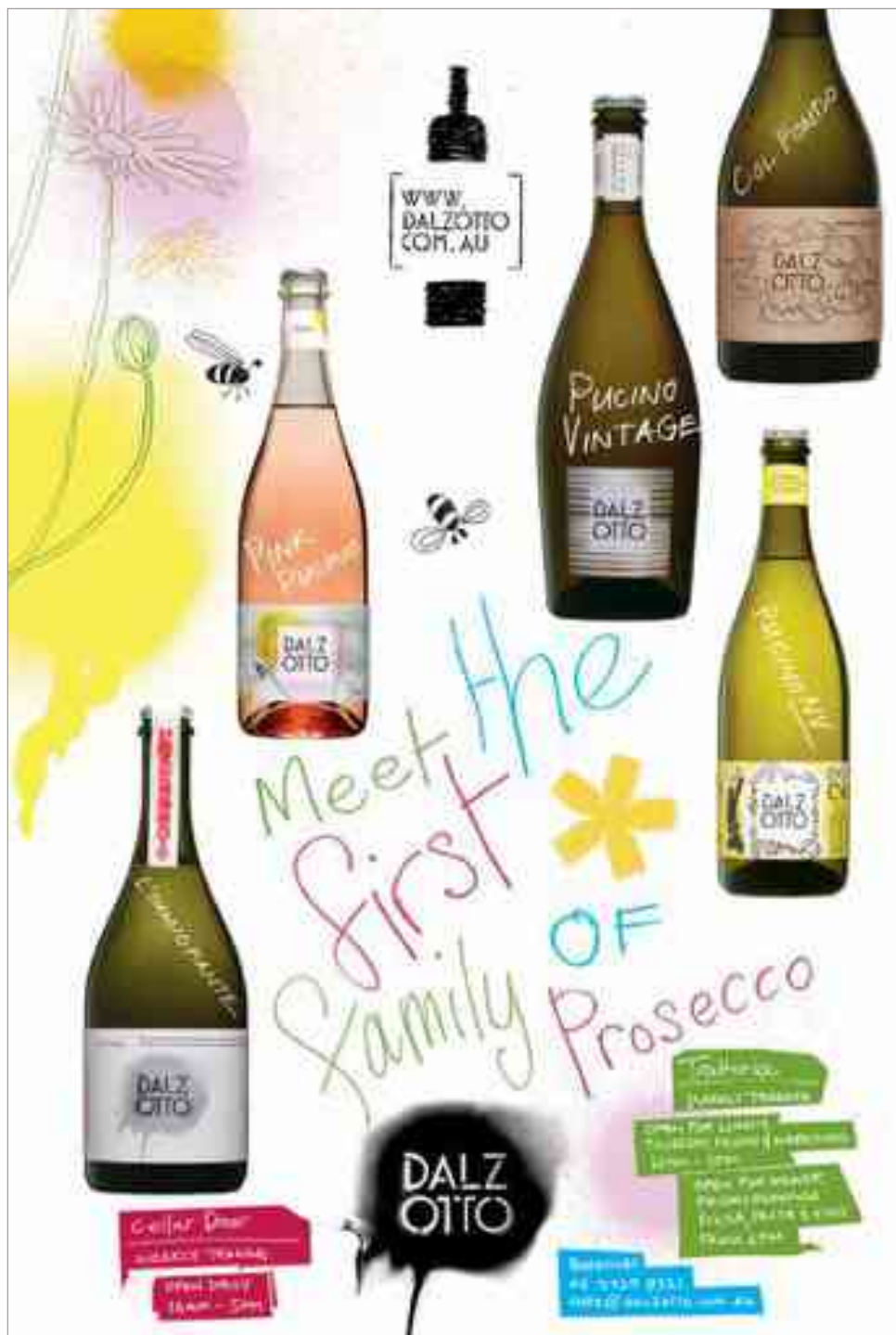
King River Estate Wines  
3556 Wangaratta Road  
Edi 3578 Victoria  
Phone: 03 5729 3689  
Email: [contact@kingriverestate.com.au](mailto:contact@kingriverestate.com.au)

## WE LET THE GRAPES DO THE TALKING

Using a traditional yet innovative approach to wine making, the King River Estate's philosophy is based on some of the "old world" techniques where wines are made naturally and the grapes are left to interact with wild yeasts, allowing for a natural fermentation to take place resulting in far more complex, soft & textural wines.







## • KING VALLEY & MILAWA GOURMET REGION •

### 8 KING RIVER BREWING

King River Brewing is a microbrewery and taproom offering both familiar and exciting beer styles from the 6 rotating taps, something for everyone to enjoy. If you're lucky the latest beer will be fresh from the brewery only metres away. Relax in the alfresco dining area or lounge in the beer garden with plenty of summer shade whilst the kids play.

**4515 Wangaratta-Whitfield Rd, KING VALLEY**  
**03 5729 3604 • taproom@kingriverbrewing.com.au**  
**kingriverbrewing.com.au**



### 9 KING RIVER ESTATE

First planted in 1990 and located on the banks of the King River under a small mountain in what is arguably the gateway to the upper King Valley. Enjoying rich alluvial deposits and natural ground water, the vines enjoy rich minerals and require minimal irrigation. The wines are made with minimal intervention thus creating a complex range of wines.

**3556 Wangaratta-Whitfield Rd, EDI**  
**03 5729 3689 • contact@kingriverestate.com.au**  
**kingriverestate.com.au**



### 10 MILAWA CHEESE COMPANY

Situated in a 100-year-old ex-butter factory in the High Country food bowl town of Milawa, Milawa Cheese Company handmakes award-winning European style cheese. Pop in for salty and sweet blue cheeses, stinky washed rinds and moreish alpine style hard cheeses. Visit and discover a restaurant, cellar door, art gallery and gift store on-site.

**17 Factory Rd, MILAWA**  
**03 5727 3589 • info@milawacheese.com.au**  
**milawacheese.com.au**



### 11 MILAWA BREAD

Milawa Bread has been producing handcrafted small batch and slow fermented bread and pastries for over 20 years. Our vision started when Adam's journey began as the first recipient of a Queens Trust Grant to study regional bread in France. Come and discover our world at The Milawa Kitchen based at the Milawa Cheese Complex. Open: Daily 9 am – 5 pm, Closed Christmas day

**17 Milawa-Bobinawarrah Rd, MILAWA**  
**03 5798 3480 • bread@milawabread.com.au**



### 12 MILAWA KITCHEN

*Bienvenue* to The Milawa Kitchen. Home of Milawa Bread where we are passionate about keeping traditional skills in regional areas. Our kitchen reflects our curiosity for European food and culture. Open: Daily 9 am – 5 pm, Closed Christmas day.

**17 Milawa-Bobinawarrah Rd, MILAWA**  
**03 5798 3486 • themilawakitchen@gmail.com**





### 13 MOUNTAIN VIEW HOTEL

Come dine with us! The Italian-style gastropub menu is available 7 days, dine inside or alfresco in the stunning beer garden, some of the trees are over 100 years old. Bookings are advised. Our welcome is warm, so please join us and enjoy local wine, beer and cider with your family and friends. Stylish motel accommodation is also available.

**4 King Valley Rd, WHITFIELD**  
**03 5729 8270 • info@mvhotel.com.au**  
**mvhotel.com.au**



### 14 PIZZINI WINES

The welcome is Italian-style and generous. Visit to taste Prosecco, Pinot Grigio, Sangiovese and Nebbiolo. A Tavola! Cooking School is part of the family's cellar door. See Pizzini website for class schedule and to book, and information about other wine and food experiences offered. Relax in the garden with a glass of wine or chat over a coffee with friends.

**175 King Valley Rd, WHITFIELD**  
**03 5729 8278 • talkdirect@pizzini.com.au**  
**pizzini.com.au**



### 15 POLITINI WINES

Discover estate-grown Sicilian heritage varietals Grecanico and Nero d'Avola, along with an outstanding range of wines including Prosecco, Sangiovese, Vermentino and more. Enjoy a Sicilian cooking experience (see our website for class details). Relax and stay longer in the King Valley at our B&B, 'Casolare'.

**65 Upper King River Rd, WHITFIELD**  
**0427 567 377 • enquiries@politiniwines.com.au**  
**politiniwines.com.au**



### 16 QUALITY HOTEL WANGARATTA GATEWAY

The perfect place to base yourself... offering 77 suites including luxury studio spa and self-contained 3 bedroom apartments, the Atrium Restaurant and Lounge, heated pool, spa, sauna, gym, undercover parking and 24 hour reception.

**29-37 Ryley St, WANGARATTA**  
**03 5721 8399 • info@wagarattagateway.com.au**  
**wagarattagateway.com.au**



### 17 RINALDOS CASA CUCINA

At Rinaldos Casa Cucina expect to experience a seasonal, traditional menu cooked with pride. Share Adam Pizzini's love for Italian home-style cooking. Located in an old Art Deco building converted to a dining space and gelato bar, Rinaldos offers more than just a little touch of Italy to the Wangaratta riverside precinct!

**56-58 Faithfull St, WANGARATTA**  
**03 5721 8800 • admin@rinaldos.com.au**  
**rinaldos.com.au**







## SPEND A DAY IN MILAWA AT BROWN BROTHERS

A visit to the Cellar Door is a chance to explore something new or try variations of your favourite wine styles. We have a wine to suit your taste, whether it's a King Valley icon such as Prosecco or Pinot Grigio, a light and fruity favourite like Moscato, or something more traditional such as big and bold Shiraz or Durif.

### PATRICIA'S TABLE

Patricia's Table; our fine dining restaurant with a casual atmosphere. Enjoy dishes created with local produce to complement our wines.

### WINE BAR

Sit back and relax with a glass of wine and some delicious regional bites any time of the year. Grab a bean bag outside in the warmer months, or nestle up by the fire during winter.

The Wine Bar menu is designed to be shared for a relaxed dining experience.

### TOURS AND EXPERIENCES

Get the most out of your visit with a tour or premium winery experience. Go behind the scenes with a tour of the winery or try your hand at blending your very own wine.

For more information go to [brownbrothers.com.au](http://brownbrothers.com.au)



Cellar Door: Open 9am-5pm daily  
Wine Bar: Open 9am-4pm daily  
Patricia's Table: Open 12pm-4pm daily

Brown Brothers Milawa Vineyard:  
239 Milawa Bobinawarra Road,  
Milawa, VIC 3678

Phone: 03 5720 5540  
[brownbrothers.com.au](http://brownbrothers.com.au)  
#brownbrothers



## • KING VALLEY & MILAWA GOURMET REGION •



### 18 SAM MIRANDA OF KING VALLEY

Embark on an adventure with wine varieties hailing from Italy, Spain, France and Georgia. The expansive terrace area is the perfect place to relax, enjoy the wines and treat yourself to seasonal local produce from the kitchen or the finest coffee. In the winter, take advantage of the cosy and relaxed atmosphere and enjoy a glass of your favourite red by the fireplace.

1019 Snow Rd, OXLEY

03 5727 3888 • [info@sammiranda.com.au](mailto:info@sammiranda.com.au)  
[sammiranda.com.au](http://sammiranda.com.au)



### 19 WALKABOUT APIARIES

Walkabout Apiaries is family beekeeping business based in Milawa, with all their own seasonal honeys, natural beeswax candles and mead to delight the senses. Their bees are at the centre of every conversation from pure honey to food pollination. Come visit their farm gate store to learn a little more about how great honey bees are.

1531 Snow Rd, MILAWA

03 5727 3468 • [info@walkabout-honey.com.au](mailto:info@walkabout-honey.com.au)  
[walkabout-honey.com.au](http://walkabout-honey.com.au)



### 20 WOOD PARK WINES

Come and taste our range of locally grown wines. Wood Park has been quietly producing quality wines such as Prosecco, Pinot Gris, Sangiovese and Tempranillo since 1989, and is a James Halliday 5 star rated winery. There is something for everyone at our cellar door so come over, relax and indulge yourself. Find us at the Milawa Cheese Company Precinct.

17 Factory Rd, MILAWA

03 5727 3778 • [cellardoor@woodparkwines.com.au](mailto:cellardoor@woodparkwines.com.au)  
[woodparkwines.com.au](http://woodparkwines.com.au)





• FEAST •



LINDENWARRAH  
AT MILAWA

223 Milawa-Bobinawarrah Rd,  
Milawa, 3678

t: +61 3 5720 5777

[info@lindenwarrah.com.au](mailto:info@lindenwarrah.com.au)  
[lancemore.com.au/lindenwarrah](http://lancemore.com.au/lindenwarrah)

**ENJOY A THREE COURSE DINNER  
and a complimentary bottle  
of sparkling wine for**

**\$70<sub>pp</sub>**

**CALL AND BOOK A TABLE  
USING THE CODE 'MERLOT'**







# MANSFIELD



Paradise for anyone with a yen for the great outdoors, Mansfield is also the closest gateway from Melbourne to the gourmet delights of Victoria's High Country. At the foot of Mount Buller and Mount Stirling with their superb seasonal snow, hiking and cycling offerings, a stone's throw from the shores of Lake Eildon and the jumping-off place for the Great Victorian Rail Trail, the town is stacked with places offering fine food to fuel any adventure. Excellent pub

food, funky cafés offering an amazing choice of yummy fresh fare to eat in or take out, house-roasted coffee, great pizza and special occasion dining are all on the Mansfield menu. Ride a horse, hire a bike, run the trails, catch a fish or ski behind a boat. After all that exertion, head to town, tired but happy, and be rewarded with a great meal washed down with a glass of delicious, locally crafted wine or ale. Cheers!





## SAVOUR THE DAY!



**COFFEE CENTRAL** • Mat Picone is serious about the coffee he selects, roasts and serves at his consistently excellent Mansfield Coffee Merchant. The food is as impressive as the brews, with an all-day menu offering killer breakfasts through to heftier dishes, cocktails and a great selection of wines.

**GO LOCAL** • Much loved Mansfield institution, the Produce Store is a lively café where the cake is home made and the shelves groaning with locally made jams, pickles, bread and a range of High Country wines. This is the place to fill the picnic basket with yummy treats for the day's adventures.

**MEAT HERE** • One for the carnivores! Bos Taurus is Mansfield's dedicated steakhouse, bar, grill and artisan butcher. Choose your own cut of locally grown Pinaroo beef for the table or have it wrapped up to take home.

**VINO + VISTA** • The award-winning biodynamic whites and reds produced at Delatite, just a 10 minute hop from Mansfield, are a good reason to visit this friendly, family-owned winery. Other good reasons include the incredible views to the Alps and a cellar door opening daily and offering food from local producers like Howe's Creek Farm, Long Lane Capers and Milawa Cheese.



## TOP 5 TOUR, TASTE & TIPPLE



**1. TO MARKET** • Taste the best of the region at the Mansfield Farmers' Market, held each fourth Saturday of the month. Fill a basket, or your panniers with locally produced and made specialties including olive oil, berries, capers, wicked fudge, handmade biscuits, cakes, bread, preserves, meats, cheeses, wine and cider.

**2. FUEL FOR ADVENTURE** • Mt Buller's twin peak is Mt Stirling, an adventurer's haven of unspoiled landscapes and beautiful alpine vistas. Happily for hungry mountain bikers tackling the Australian Alpine Epic Trail, walkers and anyone else in need of fuel, there's a little gem of a place, Mt Stirling Café, serving great coffee and fresh, delicious homemade tucker.

**3. PUB GRUB** • The Delatite Hotel in Mansfield is another local institution. Look no further for good, solid pub grub and, for cyclists, a safe place to park the bike while you tuck into a t-bone.

**4. SNOW SNOW SNOW** • Did we mention snow? Mansfield is the jumping off point for the seasonal delights of Mt Buller, Melbourne's closest alpine playground. And when the white stuff melts, Buller is home to the only certified 'Epic' mountain bike trail in the Southern Hemisphere.

**5. WATER EVERYWHERE** • Lake Eildon with all its boating, swimming and fishing pleasures is just a little way down the road from Mansfield. A great place for summer adventures along with Lake Nillahcootie on the Broken River.



• FEAST •

1 **AMONGST THE STICKS**

Amongst The Sticks can cater for anything from a sumptuous dinner party to elegant canapés and fabulous finger food. You can be guaranteed that your guests will all be talking about the delicious food and no one will go home hungry! At our place or yours we can provide the perfect solution for your next event.

12 Bayside Blvd, GOUGHS BAY  
0428 610 223 • [rachel.wadsworth75@gmail.com](mailto:rachel.wadsworth75@gmail.com)  
[thesticks.com.au](http://thesticks.com.au)



2 **BOS TAURUS**

Bos Taurus Steakhouse features grass-fed local dry aged beef from our own Billy Creek Farm in Merrijig. Alongside the amazing steaks is a modern menu featuring a wide variety of eating options and we also supply dry aged beef products through our on-site micro butchery.

13-15 High St, MANSFIELD  
03 5775 1144 • [chelton@bostaurus.com.au](mailto:chelton@bostaurus.com.au)  
[bostaurus.com.au](http://bostaurus.com.au)



**The DELATITE HOTEL**  
EAT DRINK RELAX

95 High St Mansfield  
03 5775 2604  
The Delatite Hotel  
[thedelatitehotel.com.au](http://thedelatitehotel.com.au)

**Welcome to Mansfield**

We look forward to welcoming you to Mansfield's top rated hotel on TripAdvisor

Visit us and enjoy;

- 14 comfy guest rooms with online booking
- Seasonal menu with good vego and GF too
- Great local wines, craft beers & ciders
- Regular jazz, Blues & Folk music sessions
- Sit back in our shady, pet friendly courtyard
- and a team who will make you welcome.

TRIPADVISOR  
CERTIFICATE OF EXCELLENCE  
tripadvisor

• MANSFIELD •

3 **DELATITE WINES**

A high country icon since 1982. Rated a red five star winery by James Halliday since 2009. Our Cellar Door is located in the foothills of the Victorian Alps below Mt Buller and just 10 kms from Mansfield. Visit us to taste cellar-door-only wines and our delicious range of platters and pizzas all made with local ingredients. Open from 10am-5pm daily.

Cnr Pollards and Stoney's Rd, MANSFIELD  
03 5775 2922 • [info@delatitewinery.com.au](mailto:info@delatitewinery.com.au)  
[delatitewinery.com.au](http://delatitewinery.com.au)



4 **MANSFIELD COFFEE MERCHANT**

The delicious smell of freshly roasted coffee hits you as you enter a modern, light filled space. Offering full table service of a variety of blends and single origin coffees roasted in house, paired with an expansive modern, creative menu. We want people to enjoy the coffee and food we offer with attentive, friendly service in a comfortable space.

23 Highett St, MANSFIELD  
03 5779 1703 • [mathew@mansfieldcoffeemerchant.com.au](mailto:mathew@mansfieldcoffeemerchant.com.au)  
[mansfieldcoffeemerchant.com.au](http://mansfieldcoffeemerchant.com.au)



5 **MT STIRLING CAFÉ**

The Mt Stirling Café is nestled in a forest of towering mountain ash, a gorgeous hidden delight in the heart of the High Country. In winter adventurers find a welcoming venue replete with tasty treats and snacks, and in summer a great place to catch your breath between rides! In both seasons you'll find hospitable staff with great local knowledge.

Telephone Box Junction St, MT STIRLING  
03 5777 6077 • [info@mtbuller.com.au](mailto:info@mtbuller.com.au)  
[mtstirling.com.au](http://mtstirling.com.au)



6 **THE PRODUCE STORE, MANSFIELD**

Discover "The Produce Store" and you'll know you have discovered a gem. The shelves and fridges are loaded with local and gourmet produce, browse the regional wine room and all of that before you taste the food. This is the place for breakfast, lunch and consistently good coffee. Pick up meals and delights to take home. Catering available.

68 High St, MANSFIELD  
03 5779 1404 • [info@theproducestore.com.au](mailto:info@theproducestore.com.au)  
[theproducestore.com.au](http://theproducestore.com.au)





• FEAST •

• MANSFIELD •







# RUTHERGLEN



Vines were first planted in the fertile Murray River plains around Rutherglen and Wahgunyah more than 150 years ago, and for lovers of the area's famous rich reds and luscious fortifieds, it has been a place of pilgrimage ever since.

Rutherglen's strong winemaking traditions are reflected in the many vineyards still tended by third, fourth, fifth and sixth generation descendants of the original families who settled here, bringing new techniques and a 21st century approach to the ancient craft of their forebears.

Known internationally for its iconic, robust durif varietal unique to the Rutherglen region, the area also produces excellent crisp whites, sparkling reds and sensational world-beating muscats and topaques.

Fantastic food is a natural partner to all that great wine, and the farmland around Rutherglen produces an abundance of superb locally grown produce including lamb, honey, Murray cod, olives, cherries, nuts and preserves.

This land of plenty is best explored in a leisurely way. Take a few days to visit historic cellar doors for tastings with the makers themselves. Stay for lunch at the excellent winery cafés. Experience the delights of gourmet glamping. Feast at a Chef's Hatted restaurant or head for Rutherglen's historic main street to settle in for a tippie or two at a cool wine bar or a crispy cold ale at a great little craft brewery.



• FEAST •

## SAVOUR THE DAY!



• RUTHERGLEN •



**SAINTS BE PRAISED!** • Award-winning chef, Simon Arkless, is the culinary genius at The Terrace Restaurant at All Saints Estate. His beautifully crafted dishes highlight the seasonal bounty of the region and the estate itself which produces free-range pigs, lamb, eggs, citrus and fruits. Just 3km down the road, the Murray River-side café at sister winery, St Leonards, also features menus designed by the Chef's Hatted Arkless.

**AN ARTFUL DROP** • Rutherglen Estates' historic 1886 building has been totally revamped into sleek new cellar door and Aboriginal Exhibitions Gallery space. Head here to taste the winery's extensive range and feast your eyes on an impressive collection of contemporary Aboriginal paintings and sculptural works.

**TASTE GREATNESS** • The Morris family's lineage dates back 155 years and these days the extraordinary fortifieds that continue to attract national and international attention are in the capable hands of fifth generation winemaker, David Morris. Visit the classic Robin Boyd-designed cellar door to discover what makes a fortified wine truly great.

**MAIN STREET GROOVE** • Finish the day's touring with a drink until late or tuck into some fine fare for dinner at the very funky Thousand Pound, a little taste of the city in the heart of the village.

**PEDAL TO PRODUCE** • The plains around the mighty Murray are ideal for easy, flat cycling as well as great food and wine. Grab a Pedal to Produce map from the Rutherglen Wine Experience visitor centre and take in the many cellar doors, cafés, local producers, restaurants and historic sites along and around the Rutherglen to Wahgunyah leg of the Murray to Mountains Rail Trail.





## TOP 5 TOUR, TASTE & TIPPLE



**1. OLIVES AND OILS** • The abundant sunshine and fertile soils of the area make it ideal not just for grapes, but olives as well. Head to Gooramadda's cellar door, pedalling distance from town, to taste 11 different varieties of fresh award-winning olives and house-made oils.

**2. À VOTRE SANTÉ** • The French tradition of a pre-repast tippie is alive and well at Jones Winery. Try their delicious apéritif, Correll, made from a secret blend of fortified wine, orange and spices.

**3. TOP NOSH WINERIES** • Eat great food paired with house-grown and crafted wines at a number of excellent cellar door cafés including The Pickled Sisters at Cofields Winery, the restaurant at Jones Winery, Ripe at Buller wines, The Terrace at All Saints and St Leonards Café.

**4. GLAMP IN THE VINES** • How about a romantic night under the stars in a luxe bell tent pitched with a view over the vines? Dine on delicious gourmet fare from The Pickled Sisters and wines from the very place you're staying in.

**5. FIT FOR A FAIRYTALE** • Just like Rapunzel, let down your hair in a five star romantic tower for two at Mount Ophir Estate, an historic winery not far from Rutherglen. Siblings Eliza, Nick and Angela Brown, are steadily restoring the incredible 19th century buildings on the 56 hectare property, including The Tower which is now available as luxury accommodation.



## 1 ALL SAINTS ESTATE

Established in 1864 and rated five 'Red Stars' by Halliday for over a decade, this iconic castle estate is set amongst gardens and vineyards and is a must-see destination for wine and food lovers. Taste a large range of award-winning wines at the cellar door, enjoy a leisurely lunch at 'one hat' Terrace Restaurant or relax with a platter from Indigo Food Co.

**315 All Saints Rd, WAHGUNYAH**  
**1800 021 621 • customerservice@allsaintswine.com.au**  
**allsaintswine.com.au**



## 2 ANDERSON WINERY

If you love full-bodied reds (particularly Durif) and/or premium sparkling wines, Anderson is a must visit. Father & daughter winemakers Howard & Christobelle are making some of Rutherglen's most awarded table wines. Come inside the "big white shed" and discover our wines in the ambience of a working winery.

**1619 Chiltern Rd, RUTHERGLEN**  
**02 6032 8111 • sales@andersonwinery.com.au**  
**andersonwinery.com.au**



## 3 BULLER WINES

Est. 1921 Buller Wines crafts world-renowned table wines and fortifieds from 100-year-old vines. The backbone of Buller's vineyard is some of the region's oldest Shiraz vines and today their focus is on quality and innovation. Experience exceptional lunchtime dining in our restaurant, Ripe at Buller Wines, overlooking the iconic 100-year-old Calliope Vineyard.

**2804 Federation Way, RUTHERGLEN**  
**02 6032 9660 • cellardoor@bullerwines.com.au**  
**bullerwines.com.au**



## 4 CAMPBELLS WINES

Home to the iconic Bobbie Burns Shiraz. Campbells combines 148 years of family tradition with innovation to produce distinctive Rutherglen wines. Taste limited release and back vintage wines, private tastings and explore the century-old cellars. Enjoy a Hamper Box filled with cheeses, charcuterie and more – available all day, every day!

**4603 Murray Valley Hwy, RUTHERGLEN**  
**02 6033 6000 • wine@campbellswines.com.au**  
**campbellswines.com.au**



## 5 CHAMBERS ROSEWOOD VINEYARDS

Six generations of the Chambers family have made wine at Rosewood in the heart of the beautiful Rutherglen wine region in North East Victoria. Stephen Chambers proudly continues to offer the old favourites along with some little known varieties such as Gouais and Blue Imperial plus some newer styles.

**Barkly St, RUTHERGLEN**  
**02 6032 8641 • chambers@chambersrosewood.com.au**  
**chambersrosewood.com.au**



## 6 COFIELD WINES

Cofield Wines is your ultimate winery destination. Camp in our quirky Grapevine Glamping bell tents, on a real working vineyard. Enjoy a lazy lunch at The Pickled Sisters Café, and sample the best wines the region has on offer. Sparkling wines are our specialty & we have a large range of table and dessert wines. Visit us for a complete winery offering.

**Distillery Rd, WAHGUNYAH**  
**02 6033 3798 • topdrop@cofieldwines.com.au**  
**cofieldwines.com.au**



## 7 GOORAMADDA OLIVES

Highly awarded naturally fermented olives and extra virgin olive oils. An extensive range of black and green olive varieties together with dressings, tapenade, infused oils; estate grown and produced on-site. The tastings tour ensures you leave inspired with recipe ideas on how to create with these gourmet products. Sample a range of local produce. Come for the produce, enjoy the view.

**1468 Gooramadda Rd, GOORAMADDA**  
**02 6026 5658 • shop@gooramaddaolives.com.au**  
**olivesandoil.info**



## 8 INDIGO FOOD CO.

Experience North East Victoria's best range of delicious artisan produce and gifts including the finest cheese, salami, pickles, biscuits, preserves and more. Visit for lunch and indulge in a cheese/antipasto platter or focaccia with a glass of wine by the picturesque duck pond surrounded by lush gardens and vineyards. There's plenty of space for the kids.

**315 All Saints Rd, WAHGUNYAH**  
**1800 021 621 • customerservice@allsaintswine.com.au**  
**allsaintswine.com.au**



## 9 JAMES AND CO WINES

Modern and contemporary cellar door and wine bar in Main Street Rutherglen. Regional wines from the North East with a focus on Beechworth and Sangiovese in its guises. Local gins, craft beer and gifts. 'Cheese your own adventure' from a selection of local and imported cheeses and smoked meats. Watch the world go by from a seat in the window.

**136 Main St, RUTHERGLEN**  
**0447 341 373 • sales@jamesandcowines.com.au**  
**jamesandcowines.com.au**



## 10 JONES WINERY & VINEYARD & RESTAURANT

One of the most beautiful little cellar doors and restaurants in Victoria, dating back to the 1860s. Modernist winemaker crafting wines with brightness of fruit and a dash of Frenchie-ness from Rutherglen dirt. Enjoy award-winning wines and a delicious lunch made using traditional French techniques with a modern twist and locally grown and seasonal produce.

**61 Jones Rd, RUTHERGLEN**  
**02 6032 8496 • jones@joneswinery.com**  
**joneswinery.com**







# TUILERIES

## RUTHERGLEN ESTATES



*Boutique accommodation, a la carte restaurant, cafe,  
wine bar, art gallery & cellar door all in one location.*

### Tuileries Rutherglen

Cafe Open 7 days 12 noon–2pm | Restaurant Open 7 nights 6.30pm

Wine Bar Open Tuesday–Saturday 6pm

Rutherglen Estates Cellar Door & Aboriginal Exhibitions Gallery Open 7 days 10am–5pm

T: 02 6032 9033 | [info@tuileriesrutherglen.com.au](mailto:info@tuileriesrutherglen.com.au)

[www.tuileriesrutherglen.com.au](http://www.tuileriesrutherglen.com.au) [f](#) [t](#) [i](#)

### • RUTHERGLEN •

#### 11 LAKE MOODEMERE ESTATE

Walking through the gate is an invitation to share in the richness of our lives, the beauty of our landscape, and the bounty of our estate grown produce. With every wine and every dish in our Lakeside Restaurant we invite you to share our passion for our family, our country and our joy in the pursuit of excellence.

12 Moodemere Rd, RUTHERGLEN

02 6032 9449 • [wine@moodemerewines.com.au](mailto:wine@moodemerewines.com.au)  
[moodemerewines.com.au](http://moodemerewines.com.au)



#### 12 MORRIS WINES

Nestled at the end of a driveway flanked by vineyards you will find the Morris Wines cellar door. Taste the full range of sumptuous, world-renowned fortifieds and wines made with nearly 160 years of winemaking tradition. Discover the century-old casks and famous dirt floors, and enjoy an up-close winery experience like no other. Open 7 days.

Mia Mia Rd, RUTHERGLEN

02 6026 7303 • [cellardoor@morriswines.com](mailto:cellardoor@morriswines.com)  
[morriswines.com](http://morriswines.com)



#### 13 MOUNT OPHIR ESTATE

Established in 1891 and one of the region's most unique heritage properties just 5 minutes from Rutherglen. Lovingly restored by Eliza, Angela and Nick Brown with a focus on maintaining history yet bringing the property into the future. Unique luxury accommodation, private events, memorable weddings and corporate getaways are available to book now.

168 Stillards La, RUTHERGLEN

1800 021 621 • [escape@mountopfirestate.com.au](mailto:escape@mountopfirestate.com.au)  
[mountopfirestate.com.au](http://mountopfirestate.com.au)



#### 14 PFEIFFER WINES

Pfeiffer Wines is an award-winning, family-owned winery. Our historic cellars are nestled on beautiful Sunday Creek. Visitors are always made most welcome for tastings and sales or even for turtle "pfeeding" from our "pfamous" Pfeiffer Sunday Creek Bridge.

167 Distillery Rd, WAHGUNYAH

02 6033 2805 • [cellardoor@pfeifferwines.com.au](mailto:cellardoor@pfeifferwines.com.au)  
[pfeifferwines.com.au](http://pfeifferwines.com.au)



#### 15 RUTHERGLEN ESTATES

Rutherglen Estates is a modern contemporary winery with an underlying respect for tradition. Specialising in Italian and Mediterranean varietals as well as the traditional varietals of Durif and Muscat. Cellar door also houses the Aboriginal Exhibitions Gallery, an extensive collection of Aboriginal art, sculptures and artefacts. Also on-site is Tuileries Restaurant and accommodation.

13-35 Drummond St, RUTHERGLEN

02 6032 7999 • [administration@rutherglenestates.com.au](mailto:administration@rutherglenestates.com.au)  
[rutherglenestates.com.au](http://rutherglenestates.com.au)





## 16 SCION

Scion is a producer of artisan wines, handcrafted from vine to bottle. Our progressive winemaking vision is guided by the creative and modern interpretation of traditional Rutherglen varietals. Visit to sample premium wines made in small batches, from aromatic whites to elegant reds and delicate dessert wines.

**74 Slaughterhouse Rd, RUTHERGLEN**  
**02 6032 8844 • [contact@scionvineyard.com](mailto:contact@scionvineyard.com)**  
**[scionwine.com.au](http://scionwine.com.au)**



## 17 ST LEONARDS VINEYARD

Established in 1860 and highly rated by Halliday Wine Companion, this is the perfect hideaway for wine and food lovers. The picturesque winery overlooks a bend of the Murray River and makes for an unforgettable experience. It is the perfect family lunch spot on weekends with a relaxed and casual seasonal menu and live music the first Saturday of every month.

**201 St Leonards Rd, WAHGUNYAH**  
**02 6033 1004 • [cellardoor@stleonardswine.com.au](mailto:cellardoor@stleonardswine.com.au)**  
**[stleonardswine.com.au](http://stleonardswine.com.au)**



## 18 STANTON & KILLEEN WINES

Discover your favourites from S&K's extensive range of award-winning wines at their welcoming and relaxed cellar door. With over 141 years of winemaking excellence, S&K specialise in full-bodied reds and luscious fortifieds alongside alternative wines made from many rare and unusual Portuguese varieties.

**440 Jacks Rd, RUTHERGLEN**  
**02 6032 9457 • [wines@stantonandkilleen.com.au](mailto:wines@stantonandkilleen.com.au)**  
**[stantonandkilleen.com.au](http://stantonandkilleen.com.au)**



## 19 TERRACE RESTAURANT

The magnificent All Saints Estate hosts the renowned Terrace Restaurant awarded 'one hat' by the National Good Food Guide since 2014. Indulge in an inventive seasonal menu using the finest quality, locally sourced and estate grown produce matched to an award-winning wine list. No wonder it is North East Victoria's favourite dining experience.

**315 All Saints Rd, WAHGUNYAH**  
**02 6035 2228 • [terrace@allsaintswine.com.au](mailto:terrace@allsaintswine.com.au)**  
**[allsaintswine.com.au](http://allsaintswine.com.au)**



## 20 THE PICKLED SISTERS CAFÉ

Located in the rustic surrounds of Cofield Wines we offer a relaxed and welcoming dining experience. Dine alfresco on our deck indulging in the finest regional produce matched to fabulous local wines. Gourmet produce and hampers available, and cooking schools held monthly. Perfect for weddings and celebrations. On-site accommodation at Grapevine Glamping.

**At Cofield Wines, Distillery Rd, WAHGUNYAH**  
**02 6033 2377 • [cafe@pickledsisters.com.au](mailto:cafe@pickledsisters.com.au)**  
**[pickledsisters.com.au](http://pickledsisters.com.au)**



WINEMAKERS OF RUTHERGLEN

**19 WINERIES. 7 GENERATIONS.**  
**160 YEARS OF HISTORY.**

Visit our cellar doors to discover both iconic and alternative wines, warm personalities and gourmet experiences.

FROM SUN AND SOIL.

[winemakers.com.au](http://winemakers.com.au) [f winerutherglen](https://www.facebook.com/winerutherglen) [@winerutherglen](https://www.instagram.com/winerutherglen)







OVER FIVE GENERATIONS OF



**“The art of these wines lies in the blending of very old and much younger material. They have no equivalent in any other part of the world”**

*- James Halliday Wine Companion on Morris fortified wines*



Open seven days, 9am to 5pm Mon-Sat, 10am to 4pm Sun.

Excluding Christmas Day and New Year's Day

Morris Wines, Mia Mia Road, Rutherglen, VIC, 3685

(02) 6026 7303 | [www.morriswines.com.au](http://www.morriswines.com.au) | [f /morrisofrutherglen](https://www.facebook.com/morrisofrutherglen) | [@morriswines](https://www.instagram.com/morriswines)

## • RUTHERGLEN •

### 21 THOUSAND POUND WINE BAR AND STORE

This modern bar tosses out stuffy pretences, blurs the boundaries between city and country and has a creative vin list paired with Simon Arkless's chef-driven fare. Awarded 'Best Small Bar in Australia' by Savour and a popular spot amongst locals and visitors, guests can swirl their way through the best Rutherglen wines or venture globally from their seats.

**82 Main St, RUTHERGLEN**

**02 6032 8179 • [drinkwine@thousandpound.com.au](mailto:drinkwine@thousandpound.com.au)**

**[thousandpound.com.au](http://thousandpound.com.au)**



### 22 TUILERIES

Located in the heart of Rutherglen, Tuileries is the perfect destination to spend a day or two. With boutique accommodation overlooking the vineyard, a renowned restaurant, courtyard café, pool, tennis court and conference facilities – there is something for everyone any time of the year. Also located on-site is Rutherglen Estates Cellar Door and Aboriginal Exhibitions Gallery.

**13-35 Drummond St, RUTHERGLEN**

**02 6032 9033 • [info@tuileriesrutherglen.com.au](mailto:info@tuileriesrutherglen.com.au)**

**[tuileriesrutherglen.com.au](http://tuileriesrutherglen.com.au)**



### 23 VALHALLA WINES

At Valhalla Wines, Anton the winemaker has a focus on seeking great vineyard sites, using traditional winemaking, minimal intervention and careful cellaring in the strawbale winery. Featuring some of the best grape regions in the North East including Rutherglen, Beechworth, King Valley and the Alpine Valleys. Valhalla looks to give you a journey of flavour.

**163 All Saints Rd, WAHGUNYAH**

**02 6033 1438 • [anton@valhallawines.com.au](mailto:anton@valhallawines.com.au)**

**[valhallawines.com.au](http://valhallawines.com.au)**



### 24 WINEMAKERS OF RUTHERGLEN

We are an inspiring collective of 19 wineries from one of Australia's most historic and iconic wine regions. Situated in "God's Country", protected by the Great Dividing Range, Rutherglen is blessed with cool nights, warm days and gloriously long, dry autumns. In essence, the ideal viticultural conditions for pioneering varietals that are uniquely Australian in charm and in spirit.

**57 Main St, RUTHERGLEN**

**02 6078 4188 • [natalie@winemakers.com.au](mailto:natalie@winemakers.com.au)**

**[winemakers.com.au](http://winemakers.com.au)**









# INDEX

All Saints Estate	118	Mansfield Coffee Merchant	109
Alpine Cellars	62	Michellini Wines	64
Alpine Valley Getaways	62	Milawa Bread	93
Amongst The Sticks Pty Ltd	108	Milawa Cheese Company	93
Anderson Winery	118	Milawa Kitchen	93
Australian Pumpkin Seed Company	62	Milch Café Bar	64
Baileys of Glenrowan	76	Mokoan Hub & Café	53
Beechworth Bakery	40	Morris Wines	21
Billson's	40	Morrison's of Glenrowan	76
Billy Button Wines	62	Mount Ophir Estate	121
Black Dog Brewery	76	Mountain View Hotel	94
Booths Taminick Cellars	76	Mt Buffalo Olives	66
BOS TAURUS	108	Mt Stirling Café	109
Bridge Road Brewers	41	Myrtleford Cycle Centre	66
Bright Brewery	62	Nightingale Bros Alpine Cider & Produce	67
Bright Escapes	63	Pennyweight Winery	41
Brown Brothers	88	Pfeiffer Wines	121
Buffalo Mot el Retreat	63	Pizzini Wines	94
Buller Wines	118	Politini Wines	94
Café Fez Myrtleford	63	Provenance Restaurant and Accommodation	43
Campbells Wines	118	Quality Hotel Wangaratta Gateway	94
Casa Luna Gourmet Accommodation	88	Reed & Co Distillery	67
Chambers Rosewood Vineyards	118	Rinaldos Casa Cucina	94
Chrismont Cellar Door, Restaurant and Larder	88	Rutherglen Estates	121
Christina's Luxury Retreat	63	Saint Monday	43
Cofield Wines	119	Sam Miranda of King Valley	97
Dal Zotto Wines	88	Scion	122
Delatite Wines	109	Sixpence Coffee	67
Dinner Plain Alpine Village	63	Spring Spur	67
Eldorado Road Cellar Door-Cantina	41	St Leonards Vineyard	122
Empire Hotel Beechworth	41	Stanton & Killeen Wines	122
Feathertop Winery	64	StoneTryst Spa Villas	43
Gamze Smokehouse	88	Terrace Restaurant	122
Gapsted Wines	64	The BiG House Cooking School	43
Ginger Baker Café	64	The Honey Shop by Beechworth Honey	43
Glenmore Springs Accommodation	91	The Kilnhouses	67
Gooramadda Olives	119	The Pickled Sisters Café	122
Indigo Food Co.	119	The Produce Store, Mansfield	109
Indigo Vineyard	41	Thousand Pound Wine Bar and Store	125
James and Co Wines	119	Tour de Vines	45
John Gehrig Wines	91	Tuileries	125
Jones Winery & Vineyard & Restaurant	119	Valhalla Wines	125
King River Brewing	93	Walkabout Apiaries	97
King River Estate	93	Winemakers of Rutherglen	125
Lake Moodemere Estate	121	Wood Park Wines	97



*Chrismont*

251 UPPER KING RIVER ROAD, CHESHUNT, KING VALLEY, VICTORIA  
(03) 5729 8220 | INFO@CHRISMONT.COM.AU

CELLAR DOOR | RESTAURANT | LARDER | FUNCTIONS | GUEST HOUSE | WINE CLUB

VISIT [CHRISMONT.COM.AU](http://CHRISMONT.COM.AU)







NEW SOUTH WALES

To Sydney

HIGH COUNTRY RAIL TRAIL

Corrington

Tallangatta

Kiewa

YACKANDANDAH

Kergunyah

Gundowring

Dederang

Wooragee

Stanley

Gapsted

MYRTLEFORD

Rosewhite

Happy Valley

Eurobin

Porepunkah

BRIGHT

Wandiligong

Tawonga

MOUNT BEAUTY

ALPINE NATIONAL PARK

FALLS CREEK

MOUNT FEATHERTOP

HOTHAM

DINNER PLAIN

To Bairnsdale

Omeo

ALPINE NATIONAL PARK

MT BULLER

Mirimbah

Mansfield

Bonnie Doon

GREAT VICTORIAN RAIL TRAIL

Upper Goulburn Wine Region

Jamieson

Tolmie

Whitlands

Cheshunt

Cheshunt South

Myrree

Whitfield

Edi Upper

Edi

Moyhu

Greta

GLENROWAN

Taminick

WANGARATTA

WARBY-OVENS NATIONAL PARK

Wangandary

BEECHWORTH

Tarrawingee

Oxley

Everton

Eldorado

Reedy Creek

Springhurst

Chiltern

RUTHERGLEN

Wahgunyah

Corowa

Howlong

Mulwala

Yarrowonga

Murray River

Black Dog Creek

Overs River

Winton Wetlands

HUME FWY

BENALLA

To Melbourne

MIDLAND HWY

Broken River

To Yarra Valley & Melbourne

MURRAY TO MOUNTAINS RAIL TRAIL

MILLAWA

Millawa Gourmet Region

Glenrowan Wine Region

Beechworth Wine Region

Rutherglen Wine Region

Chiltern-Mt Pilot National Park

Chiltern-Mt Pilot National Park

Chiltern-Mt Pilot National Park

Chiltern-Mt Pilot National Park

Chiltern-Mt Pilot National Park

Chiltern-Mt Pilot National Park

Chiltern-Mt Pilot National Park

Chiltern-Mt Pilot National Park

Chiltern-Mt Pilot National Park

Chiltern-Mt Pilot National Park

Chiltern-Mt Pilot National Park



Rail Trail

Detailed maps at [ridehighcountry.com.au](http://ridehighcountry.com.au)





Meet the producers, play a game of bocce,  
feast on local produce and live in Prosecco style.

# KING VALLEY

- PROSECCO ROAD -

